

PERÜCKEN · WIGS · PERRUQUES · PELUCAS · PARRUCHE

# Belle Madame<sup>®</sup>

PLATINUM HAIR LINE



by DENING HAIR

Belle Madame®

PLATINUM HAIR LINE

# PLATINUM HAIR

**EXZELLENTER  
HAAR-MIX  
FÜR HÖCHSTE  
ANSPRÜCHE**

**EXCELLENT  
HAIR MIX  
TO MEET THE  
HIGHEST  
DEMANDS**

**EXCELLENT  
MÉLANGE DE  
CHEVEUX A LA  
HAUTEUR DES  
EXIGENCES LES  
PLUS STRICTES**

**EXCELENTE  
MEZCLA DE  
CABELLO CON  
LAS MÁXIMAS  
EXPECTATIVAS**

**ECCELLENTE  
MIX DI  
CAPELLI  
PER LE  
MASSIME  
ESIGENZE**

LIEBE  
KUNDINNEN,  
LIEBE  
KUNDEN,

DEAR  
CLIENTS,

CHÈRES  
CLIENTES,  
CHERS  
CLIENTS,

ESTIMADAS  
CLIENTAS,  
ESTIMADOS  
CLIENTES,

GENTILI  
CLIENTI,

High-Tech trifft auf Natur, ein Gegensatz, der sich beim PLATINUM Haar perfekt ergänzt. Die Verbindung von hochwertigem Echthaar und hitzebeständiger High-Tech Kunthaarfaser kombiniert die Vorteile beider Haarqualitäten. Daraus ergibt sich besonders weiches und natürlich anmutendes Haar mit besten Pflegeeigenschaften.

High-tech meets nature, a contrast which perfectly complements each other in PLATINUM Hair. The combination of high-quality human hair and heat-resistant high-tech synthetic fiber combines the advantages of both types of hair. This produces particularly soft and natural looking hair with the best features for easy hair care.

Mariage parfait entre haute technologie et fibres naturelles, un contraste parfaitement réussi pour la gamme capillaire PLATINUM. La parfaite alliance d'un cheveu naturel de grande qualité avec une fibre synthétique high-tech résistante à la chaleur associe les avantages des deux fibres capillaires, pour des cheveux particulièrement soyeux, d'apparence naturelle et très faciles d'entretien.

Alta tecnología y naturaleza: un contraste que se complementa a la perfección con el pelo PLATINUM. La unión de pelo natural de alta calidad y fibras sintéticas de alta tecnología combina las ventajas de ambas fibras capilares. De esto resulta un pelo especialmente suave y de aspecto natural con las mejores características de cuidado.

L'alta tecnologia incontra la natura, due opposti che si completano perfettamente nel caso dei capelli PLATINUM. La combinazione tra capelli veri di alta qualità e la fibra sintetica termoresistente ad alta tecnologia coniuga i vantaggi di entrambe le fibre capillari. Il risultato sono capelli particolarmente morbidi e dall'aspetto naturale con ottime caratteristiche di manutenzione.

Geprägt durch unsere Firmenphilosophie und unsere Erfahrung aus über 50 Jahren, ist die BELLE MADAME PLATINUM HAIR LINE mit höchsten Ansprüchen in Bezug auf Qualität und Optik entwickelt worden. Die Modelle dieser Kollektion bestechen außerdem durch ihre perfekte Schnittführung und traumhaften Colorationen.

Influenced by our company philosophy and our experience from more than 50 years, the BELLE MADAME PLATINUM HAIR LINE has been developed to the highest specifications for quality and look. The models in this collection win over with their perfect cut and stunning colorations.

Fidèle à notre philosophie d'entreprise et reposant sur notre expérience de plus de 50 ans, la gamme BELLE MADAME PLATINUM HAIR LINE a été développée pour répondre aux exigences les plus élevées en termes de qualité et d'esthétique. Les modèles de cette collection séduisent également par leur coupe parfaite et leurs couleurs époustouflantes.

Basada en filosofía empresarial y nuestros más de 50 años de experiencia, la BELLE MADAME PLATINUM HAIR LINE ha sido desarrollada con los máximos requisitos de calidad y estética. Además, los modelos de esta colección destacan por su perfecto corte y cautivadoras coloraciones.

Grazie alla nostra filosofia aziendale e alla nostra esperienza di oltre 50 anni, la BELLE MADAME PLATINUM HAIR LINE è stata sviluppata per soddisfare le esigenze più elevate in termini di qualità e aspetto. I modelli di questa collezione seducono anche grazie ai loro tagli perfetti e ai loro magnifici colori.

Entdecken Sie die BELLE MADAME PLATINUM HAIR LINE und freuen Sie sich auf eine traumhafte Kollektion.

Discover the BELLE MADAME PLATINUM HAIR LINE and look forward to a fantastic collection.

Découvrez la BELLE MADAME PLATINUM HAIR LINE et profitez d'une collection exceptionnelle.

Descubra la BELLE MADAME PLATINUM HAIR LINE y disfrute de una colección de ensueño.

Scopra la BELLE MADAME PLATINUM HAIR LINE e si lasci incantare da una fantastica collezione.

IHR  
ALEXANDER DENING  
& TEAM

YOURS  
ALEXANDER DENING  
& TEAM

ALEXANDER DENING  
ET SON ÉQUIPE

ALEXANDER DENING  
& EQUIPO

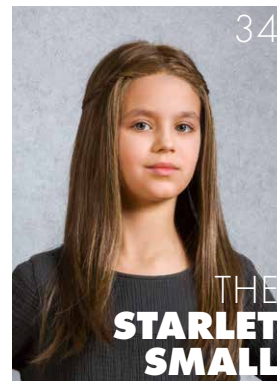
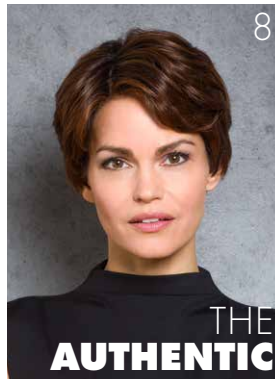
IL VOSTRO  
ALEXANDER DENING  
& TEAM

**Belle Madame®**  
**PLATINUM HAIR LINE**

by DENING HAIR

# INDEX

## PERÜCKEN WIGS



## HAARTEILE HAIR PIECES



# INHALT CONTENTS



PLATINUM HAIR LINE  
PERÜCKEN / WIGS

THE <b>SWIFT</b>	<b>6-7</b>
THE <b>AUTHENTIC</b>	<b>8-9</b>
THE <b>CLASSIC</b>	<b>10-11</b>
THE <b>SPLENDID</b>	<b>12-13</b>
THE <b>CHARMING</b>	<b>14-15</b>
THE <b>POSH</b>	<b>16-17</b>
THE <b>ELEGANT</b>	<b>18-19</b>
THE <b>CASUAL</b>	<b>20-21</b>
THE <b>GRACE</b>	<b>22-23</b>
THE <b>DELIGHT</b>	<b>24-25</b>
THE <b>SOPHISTICATED</b>	<b>26-27</b>
THE <b>STARLET</b>	<b>28-29</b>
THE <b>GLAMOROUS</b>	<b>30-31</b>
THE <b>ELEGANT LARGE</b>	<b>32</b>
THE <b>STARLET LARGE</b>	<b>33</b>
THE <b>STARLET SMALL</b>	<b>34-35</b>

HAARTEILE  
HAIR PIECES **36**

THE <b>HAIR PIECE</b>	<b>36</b>
THE <b>PARTING 2</b>	<b>36</b>
THE <b>PARTING LONG</b>	<b>38</b>

KEY FACTS  
**EIGENSCHAFTEN 40-41**

OVERVIEW  
HAIR COLOURS  
**ÜBERSICHT  
HAARFARBEN 42**

Belle Madame®

PLATINUM HAIR LINE

THE SWIFT

THE SWIFT  
Caramel-Root



THE SWIFT  
Pearl-Blond-Root

THE SWIFT  
Salt&Pepper

## THE SWIFT

●●●●○◀ S/M (53 - 55 cm)

FRONT SUPER-FRONT  
HAIR LENGTH 5 - 7 cm

### BROWN COLOURS

Dark-Mocca (4)  
Mocca-Mix (6/10-6)  
Chocolate-Mix-Root (8/10/27+Root8)

### BLOND COLOURS

Medium-Blond-Mix-Root (10/12/20+Root10)  
Caramel-Root (12/27/22H+Root10)  
Light-Blond-Mix-Root (15/20/23+Root10)  
Champagne-Root (20R/23+Root10)  
Swedish-Mix (23A/25R/26)

### RED COLOURS

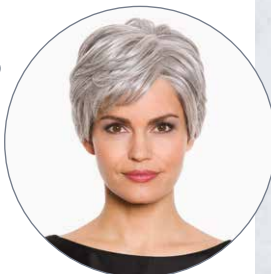
Ruby-Mix (33/32B/135/29)  
Light-Copper-Mix (30/27)

### GREY COLOURS

Dark-Smoke-Grey (39/43+F56)  
Salt&Pepper (51/44-44)  
Smoke-Grey (43/56-39)  
Pearl-Blond-Root (101/14+Root10)

360°

THE SWIFT  
Salt&Pepper



THE AUTHENTIC



360°  
THE AUTHENTIC  
Chocolate-Root

# THE AUTHENTIC

●●●●● < S/M (53 - 55 cm)

FRONT SOFT-SUPER-FRONT  
Double-layer: French-Lace  
+ Hollywood-Lace

HAIR LENGTH 5 - 9,5 cm

## BROWN COLOURS

Dark-Mocca (4)  
Mocca-Mix (6/10-6)  
Chocolate-Root (8/12/30+Root4)  
Chocolate-Mix-Root (8/10/27+Root8)

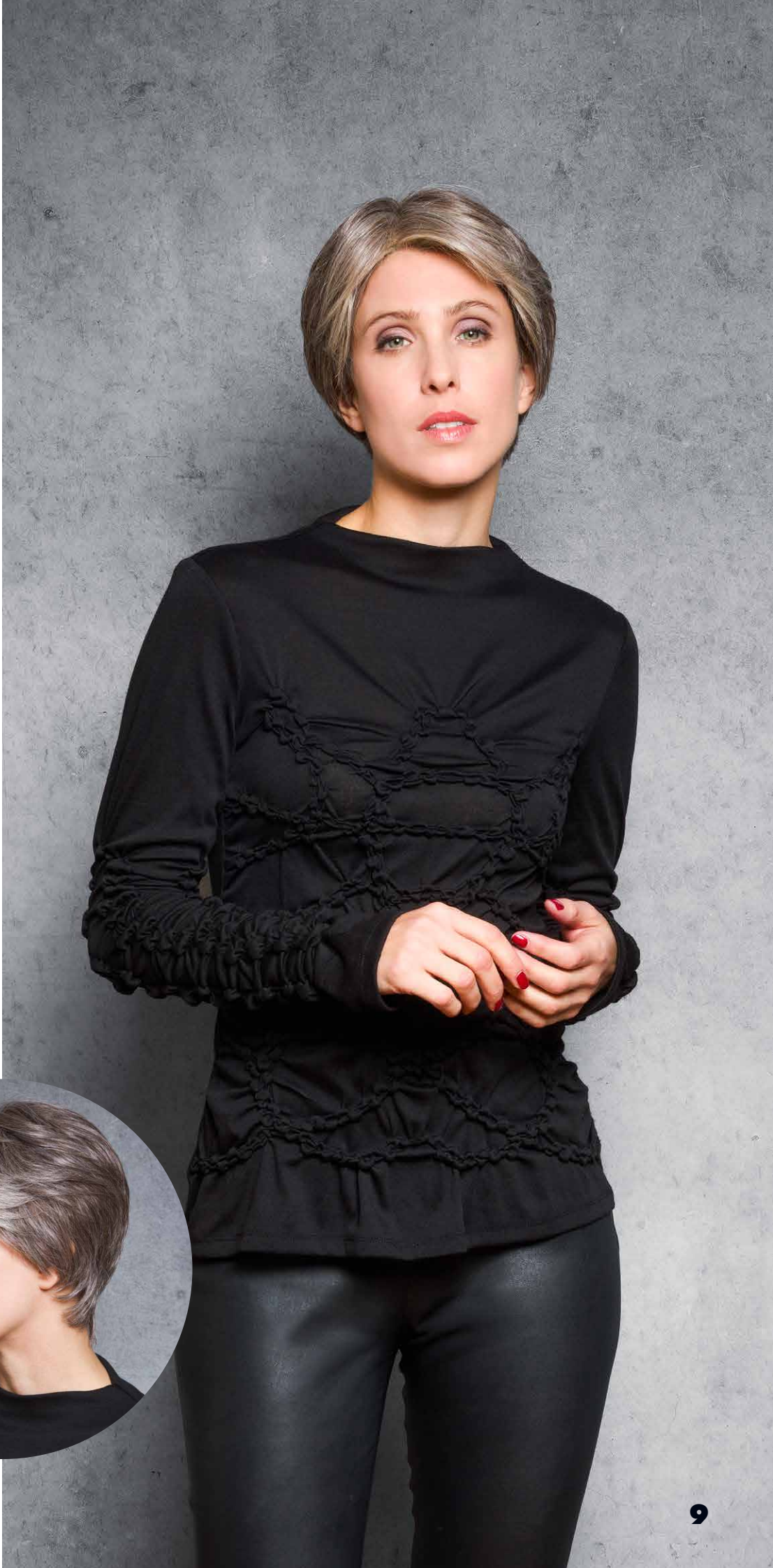
## BLOND COLOURS

Medium-Blond-Mix (10/12/20)  
Caramel-Root (12/27/22H+Root10)  
Light-Blond-Mix-Root (15/20/23+Root10)  
Champagne-Root (20R/23+Root10)  
Swedish-Mix (23A/25R/26)

## GREY COLOURS

Dark-Smoke-Grey (39/43+F56)  
Salt&Pepper (51/44-44)  
Smoke-Grey (43/56-39)  
Pearl-Blond-Root (101/14+Root10)

THE AUTHENTIC  
*Dark-Smoke-Grey*





## THE CLASSIC

●●●●● < S (52 - 54 cm)

FRONT HAIR LENGTH	SUPER-FRONT 7 - 12.5 cm
----------------------	----------------------------

### BROWN COLOURS

- Espresso-Mix (2/4)
- Dark-Mocca-Mix (4/8)
- Mocca-Mix (6/10-6)
- Chocolate-Mix (8/10/27/20)

### BLOND COLOURS

- Medium-Blond-Mix-Root (10/12/20+Root10)
- Caramel-Root (12/27/22H+Root10)
- Vanilla-Light-Root (11/20/23-11+Root11)
- Light-Blond-Mix (15/20/23+Root11)
- Champagne-Root (20R/23+Root10)
- Nordic-Ash-Blond (22/23-16+Root16)

### RED COLOURS

- Ruby-Mix (33/32B/135/29)
- Light-Copper-Mix (30/27)

### GREY COLOURS

- Dark-Smoke-Grey (39/43+F56)
- Salt&Pepper (51/44-44)
- Smoke-Grey (43/56-39)
- Pearl-Blond (101/14-14)



THE CLASSIC  
Smoke-Grey

# THE CLASSIC

Belle Madame®

PLATINUM HAIR LINE



THE CLASSIC  
*Champagne-Root*

360°

THE CLASSIC  
*Champagne-Root*





THE SPLENDID

THE SPLENDID  
*Light-Blond-Mix-Root*

# THE SPLENDID

●●●●○ < S/M (53 - 55 cm)

FRONT SOFT-SUPER-FRONT  
Swiss Lace

HAIR LENGTH 5 - 18 cm

## BROWN COLOURS

- Dark-Mocca (4)
- Mocca-Mix (6/10-6)
- Chocolate-Mix-Root (8/10/27+Root8)

## BLOND COLOURS

- Medium-Blond-Mix-Root (10/12/20+Root10)
- Caramel-Root (12/27/22H+Root10)
- Light-Blond-Mix-Root (15/20/23+Root10)
- Champagne-Root (20R/23+Root10)
- Swedish-Mix (23A/25R/26)

## RED COLOURS

- Ruby-Mix (33/32B/135/29)
- Light-Copper-Mix (30/27)

## GREY COLOURS

- Dark-Smoke-Grey (39/43+F56)
- Salt&Pepper (51/44-44)
- Pearl-Blond-Root (101/14+Root10)

360°

THE SPLENDID  
Light-Blond-Mix-Root



THE SPLENDID  
Chocolate-Mix-Root



BelleMadame®  
PLATINUM HAIR LINE

THE CHARMING

THE CHARMING  
*Caramel-Root*



## THE CHARMING

●●●●● < S/M (53 - 55 cm)

FRONT	SUPER-FRONT
HAIR LENGTH	5 - 17.5 cm

### BROWN COLOURS

- Espresso-Mix (2/4)
- Dark-Mocca-Mix (4/8)
- Mocca-Mix (6/10-6)
- Chocolate-Mix (8/10/27/20)

### BLOND COLOURS

- Caramel-Root (12/27/22H+Root10)
- Vanilla-Light-Root (11/20/23-11+Root11)
- Light-Blond-Mix (15/20/23+Root11)
- Champagne-Root (20R/23+Root10)
- Nordic-Ash-Blond (22/23-16+Root16)
- Swedish-Mix (23A/25R/26)

### RED COLOURS

- Ruby-Mix (33/32B/135/29)
- Light-Copper-Mix (30/27)

### GREY COLOURS

- Dark-Smoke-Grey (39/43+F56)
- Smoke-Grey (43/56-39)
- Blond-Grey-Root (17/101+Root18)

360°

THE CHARMING  
Chocolate-Mix





## THE POSH

●●●●● < S/M (53 - 55 cm)

FRONT	SUPER-FRONT
HAIR LENGTH	9- 24 cm

### BROWN COLOURS

- Dark-Mocca (4)
- Mocca-Mix (6/10-6)
- Chocolate-Root (8/12/30+Root4)
- Chocolate-Mix-Root (8/10/27+Root8)

### BLOND COLOURS

- Medium-Blond-Mix (10/12/20)
- Caramel-Root (12/27/22H+Root10)
- Light-Blond-Mix-Root (15/20/23+Root10)
- Champagne-Root (20R/23+Root10)
- Light-Scandinavian-Mix (23/25R)

### RED COLOURS

- Ruby-Mix (33/32B/135/29)

### GREY COLOURS

- Salt&Pepper (51/44-44)
- Pearl-Blond-Root (101/14+Root10)



# 360°

THE POSH  
Medium-Blond-Mix

THE POSH

THE POSH  
*Ruby-Mix*



THE ELEGANT  
*Light-Blood-Mix*

# THE ELEGANT

THE ELEGANT LARGE ↻ Seite 32 / Page 32

## THE ELEGANT

●●●●● < S/M (53 - 55 cm)

FRONT SUPER-FRONT  
HAIR LENGTH 14 - 32 cm

### BROWN COLOURS

Espresso-Mix (2/4)  
Dark-Mocca-Mix (4/8)  
Mocca-Mix (6/10-6)  
Chocolate-Mix (8/10/27/20)

### BLOND COLOURS

Caramel-Root (12/27/22H+Root10)  
Vanilla-Light-Root (11/20/23-11+Root11)  
Light-Blond-Mix (15/20/23+Root11)  
Champagne-Root (20R/23+Root10)  
Nordic-Ash-Blond (22/23-16+Root16)  
Swedish-Mix (23A/25R/26)

### RED COLOURS

Dark-Cherry (4/133/32B)  
Ruby-Mix (33/32B/135/29)  
Light-Copper-Mix (30/27)

### GREY COLOURS

Dark-Smoke-Grey (39/43+F56)  
Smoke-Grey (43/56-39)  
Blond-Grey-Root (17/101+Root18)

360°

THE ELEGANT  
Dark-Cherry



**BelleMadame®**

**PLATINUM HAIR LINE**

THE CASUAL  
*Light-Copper-Mix*

# THE CASUAL

THE CASUAL  
Mocca-Mix

## THE CASUAL

●●●●● < S/M (53 - 55 cm)

FRONT SUPER-FRONT  
HAIR LENGTH 15 - 30 cm

### BROWN COLOURS

- Dark-Mocca (4)
- Mocca-Mix (6/10-6)
- Chocolate-Root (8/12/30+Root4)
- Chocolate-Mix-Root (8/10/27+Root8)

### BLOND COLOURS

- Medium-Blond-Mix (10/12/20)
- Caramel-Root (12/27/22H+Root10)
- Light-Blond-Mix-Root (15/20/23+Root10)
- Champagne-Root (20R/23+Root10)
- Light-Scandinavian-Mix (23/25R)

### RED COLOURS

- Light-Copper-Mix (30/27)

### GREY COLOURS

- Pearl-Blond-Root (101/14+Root10)

360°

THE CASUAL  
Light-Copper-Mix





THE GRACE  
*Vanilla-Light-Root*

THE BENDID  
*Light-Gold-Light-Root*

# THE GRACE

# THE GRACE

●●●●● < S/M (53 - 55 cm)

FRONT SUPER-FRONT  
HAIR LENGTH 35 cm

## BROWN COLOURS

- Espresso-Mix (2/4)
- Dark-Mocca-Mix (4/8)
- Mocca-Mix (6/10-6)
- Chocolate-Mix (8/10/27/20)

## BLOND COLOURS

- Caramel-Root (12/27/22H+Root10)
- Vanilla-Light-Root (11/20/23-11+Root11)
- Light-Blond-Mix (15/20/23+Root11)
- Champagne-Root (20R/23+Root10)
- Nordic-Ash-Blond (22/23-16+Root16)
- Swedish-Blond-Mix (25R/22H-20+Root16)
- Swedish-Mix (23A/25R/26)

## RED COLOURS

- Ruby-Mix (33/32B/135/29)
- Light-Copper-Mix (30/27)

## GREY COLOURS

- Pearl-Blond (101/14-14)

360°

THE GRACE  
Vanilla-Light-Root



THE GRACE  
Caramel-Root



## THE DELIGHT

●●●○○○ ◀ S (52 - 54 cm)

FRONT	SUPER-FRONT
	Mono-Scheitel / Mono-Parting
HAIR LENGTH	18 - 33 cm

### BROWN COLOURS

- Espresso-Mix (2/4)
- Dark-Mocca-Mix (4/8)
- Mocca-Mix (6/10-6)
- Chocolate-Mix (8/10/27/20)

### BLOND COLOURS

- Caramel-Root (12/27/22H+Root10)
- Vanilla-Light-Root (11/20/23-11+Root11)
- Light-Blond-Mix (15/20/23+Root11)
- Champagne-Root (20R/23+Root10)
- Nordic-Ash-Blond (22/23-16+Root16)
- Swedish-Blond-Mix (25R/22H-20+Root16)

### RED COLOURS

- Ruby-Mix (33/32B/135/29)
- Light-Copper-Mix (30/27)

### GREY COLOURS

- Pearl-Blond (101/14-14)

THE DELIGHT  
*Pearl-Blond*



# 360°

THE DELIGHT  
*Nordic-Ash-Blond*

# THE DELIGHT

Belle Madame®

PLATINUM HAIR LINE



THE DELIGHT  
*Nordic-Ash-Blond*



THE SOPHISTICATED

THE SOPHISTICATED  
*Light-Scandinavian-Mix*

THE SOPHISTICATED  
*Pearl-Blond-Root*



## THE SOPHISTICATED

●●●●● < S/M (53 - 55 cm)

FRONT SOFT-SUPER-FRONT  
Double-layer: Superfine Welded Mono  
+ Hollywood-Lace

HAIR LENGTH 30 - 35 cm

### BROWN COLOURS

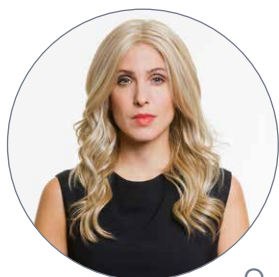
Dark-Mocca (4)  
Mocca-Mix (6/10-6)  
Chocolate-Root (8/12/30+Root4)  
Chocolate-Mix-Root (8/10/27+Root8)

### BLOND COLOURS

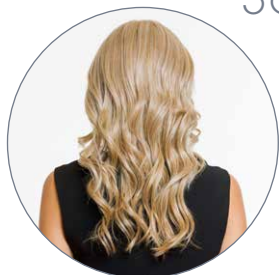
Medium-Blond-Mix-Root (10/12/20+Root10)  
Light-Blond-Mix-Root (15/20/23+Root10)  
Light-Scandinavian-Mix (23/25R)

### GREY COLOURS

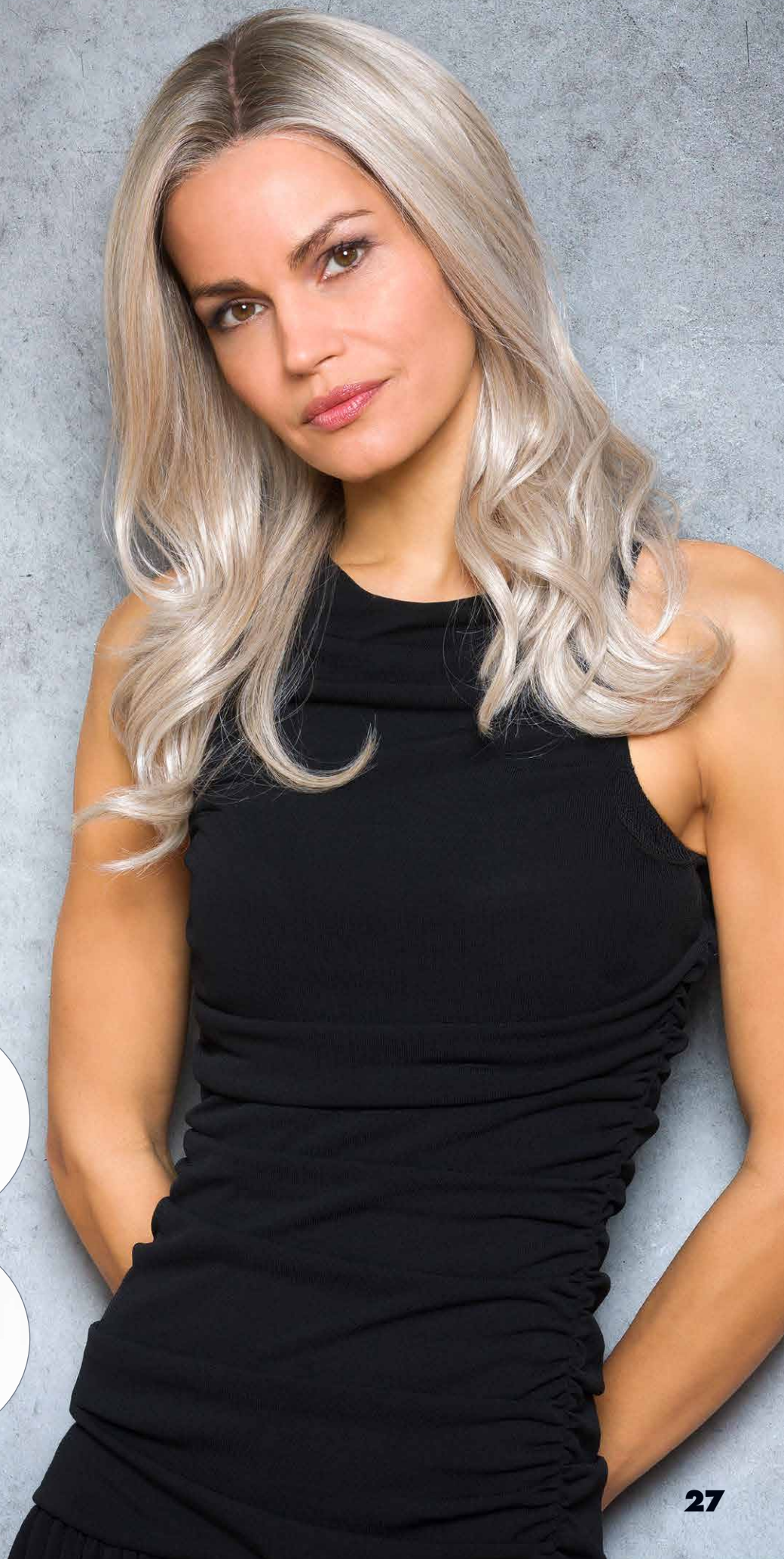
Pearl-Blond-Root (101/14+Root10)



360°



THE SOPHISTICATED  
*Light-Scandinavian-Mix*





THE STARLET  
*Swedish-Blond-Mix*

# THE STARLET

THE STARLET  
Mocca-Mix

THE STARLET LARGE ↻ Seite 33 / Page 33

## THE STARLET

●●●●● < S/M (53 - 55 cm)

FRONT SUPER-FRONT  
HAIR LENGTH 35 - 40 cm

### BROWN COLOURS

Espresso-Mix (2/4)  
Dark-Mocca-Mix (4/8)  
Mocca-Mix (6/10-6)  
Chocolate-Mix (8/10/27/20)

### BLOND COLOURS

Caramel-Root (12/27/22H+Root10)  
Vanilla-Light-Root (11/20/23-11+Root11)  
Light-Blond-Mix (15/20/23+Root11)  
Champagne-Root (20R/23+Root10)  
Nordic-Ash-Blond (22/23-16+Root16)  
Swedish-Blond-Mix (25R/22H-20+Root16)

### RED COLOURS

Dark-Cherry (4/133/32B)  
Ruby-Mix (33/32B/135/29)  
Light-Copper-Mix (30/27)

360°

THE STARLET  
Light-Copper-Mix



Belle Madame®

PLATINUM HAIR LINE

# THE GLAMOROUS

THE GLAMOROUS  
Vanilla-Light-Root

# THE GLAMOROUS

●●●●● < S/M (53 - 55 cm)

FRONT SUPER-FRONT  
HAIR LENGTH 45 cm

### BROWN COLOURS

- Espresso-Mix (2/4)
- Dark-Mocca-Mix (4/8)
- Mocca-Mix (6/10-6)
- Chocolate-Mix (8/10/27/20)

### BLOND COLOURS

- Caramel-Root (12/27/22H+Root10)
- Vanilla-Light-Root (11/20/23-11+Root11)
- Light-Blond-Mix (15/20/23+Root11)
- Champagne-Root (20R/23+Root10)
- Nordic-Ash-Blond (22/23-16+Root16)
- Swedish-Blond-Mix (25R/22H-20+Root16)
- Swedish-Mix (23A/25R/26)

### RED COLOURS

- Ruby-Mix (33/32B/135/29)
- Light-Copper-Mix (30/27)

360°

THE GLAMOROUS  
Vanilla-Light-Root



THE GLAMOROUS  
Espresso-Mix

# THE ELEGANT LARGE

●●●●● < L/XL (57 - 59 cm)

FRONT HAIR LENGTH	SUPER-FRONT 14 - 32 cm
----------------------	---------------------------

### BROWN COLOURS

- Espresso-Mix (2/4)
- Dark-Mocca-Mix (4/8)
- Mocca-Mix (6/10-6)
- Chocolate-Mix (8/10/27/20)

### BLOND COLOURS

- Caramel-Root (12/27/22H+Root10)
- Vanilla-Light-Root (11/20/23-11+Root11)
- Light-Blond-Mix (15/20/23+Root11)
- Champagne-Root (20R/23+Root10)
- Nordic-Ash-Blond (22/23-16+Root16)
- Swedish-Blond-Mix (25R/22H-20+Root16)

### RED COLOURS

- Ruby-Mix (33/32B/135/29)
- Light-Copper-Mix (30/27)

### GREY COLOURS

- Smoke-Grey (43/56-39)
- Pearl-Blond (101/14-14)



360°  
THE ELEGANT LARGE  
Chocolate-Mix

THE ELEGANT LARGE  
Chocolate-Mix

THE STARLET ↻ Seite 28 / Page 28

## THE STARLET LARGE

●●●●● < L (56 - 58 cm)

FRONT HAIR LENGTH	SUPER-FRONT 35 - 40 cm
----------------------	---------------------------

### BROWN COLOURS

- Espresso-Mix (2/4)
- Dark-Mocca-Mix (4/8)
- Mocca-Mix (6/10-6)
- Chocolate-Mix (8/10/27/20)

### BLOND COLOURS

- Caramel-Root (12/27/22H+Root10)
- Vanilla-Light-Root (11/20/23-11+Root11)
- Light-Blond-Mix (15/20/23+Root11)
- Champagne-Root (20R/23+Root10)
- Nordic-Ash-Blond (22/23-16+Root16)
- Swedish-Blond-Mix (25R/22H-20+Root16)

### RED COLOURS

- Ruby-Mix (33/32B/135/29)
- Light-Copper-Mix (30/27)



THE STARLET LARGE  
Caramel-Root



THE STARLET SMALL  
*Chocolate-Mix*

# THE STARLET SMALL

THE STARLET ↻ Seite 28 / Page 28

## THE STARLET SMALL

●●●●● < XS (50 - 52 cm)

FRONT SOFT-SUPER-FRONT  
Single-layer Soft-Lace-Front  
HAIR LENGTH 35 - 40 cm

### BROWN COLOURS

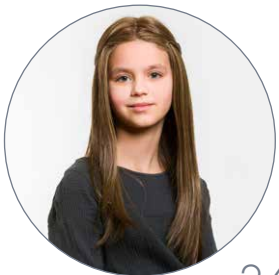
Dark-Mocca-Mix (4/8)  
Mocca-Mix (6/10-6)  
Chocolate-Mix (8/10/27/20)

### BLOND COLOURS

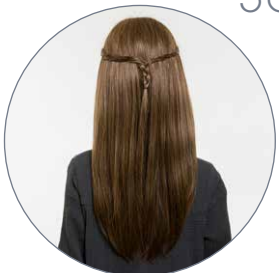
Caramel-Root (12/27/22H+Root10)  
Vanilla-Light-Root (11/20/23-11+Root11)  
Light-Blond-Mix (15/20/23+Root11)  
Champagne-Root (20R/23+Root10)  
Swedish-Mix (23A/25R/26)

### RED COLOURS

Light-Copper-Mix (30/27)



360°



THE STARLET SMALL  
Chocolate-Mix





THE HAIR PIECE  
Mocca-Mix

# HAIR PIECES

## HAARTEILE



## THE HAIR PIECE

FRONT	SUPER-FRONT
SIZE	17 x 12 cm
HAIR LENGTH	17.5 – 22.5 cm

Super-Fein-Mittel-Mono mit 4 Clipsen  
Superfine-welded-mono with 4 clips

### BROWN COLOURS

Espresso-Mix (2/4)  
Dark-Mocca-Mix (4/8)  
Mocca-Mix (6/10-6)  
Chocolate-Mix (8/10/27/20)

### BLOND COLOURS

Caramel-Root (12/27/22H+Root10)  
Vanilla-Light-Root (11/20/23-11+Root11)  
Light-Blond-Mix (15/20/23+Root11)  
Champagne-Root (20R/23+Root10)  
Swedish-Mix (23A/25R/26)

### RED COLOURS

Ruby-Mix (33/32B/135/29)  
Light-Copper-Mix (30/27)

### GREY COLOURS

Dark-Smoke-Grey (39/43+F56)  
Salt&Pepper (51/44-44)  
Smoke-Grey (43/56)  
Light-Smoke-Grey (56/53)  
Blond-Grey-Root (17/101+Root18)  
*Pearl-Blond (101/14)*

## THE PARTING 2

FRONT	SUPER-FRONT
SIZE	14 x 8 cm
HAIR LENGTH	35 cm

Super-Fein-Mittel-Mono mit 4 Clipsen  
Superfine-welded-mono with 4 clips

### BROWN COLOURS

Espresso-Mix (2/4)  
Dark-Mocca-Mix (4/8)  
Mocca-Mix (6/10-6)  
Chocolate-Mix (8/10/27/20)

### BLOND COLOURS

Caramel-Root (12/27/22H+Root10)  
Vanilla-Light-Root (11/20/23-11+Root11)  
Light-Blond-Mix (15/20/23+Root11)  
*Champagne-Root (20R/23+Root10)*  
Swedish-Mix (23A/25R/26)

### RED COLOURS

Ruby-Mix (33/32B/135/29)  
Light-Copper-Mix (30/27)

### GREY COLOURS

Dark-Smoke-Grey (39/43+F56)  
Smoke-Grey (43/56)  
Light-Smoke-Grey (56/53)  
Blond-Grey-Root (17/101+Root18)  
*Pearl-Blond (101/14)*

**BelleMadame®**  
**PLATINUM HAIR LINE**



THE  
**HAIR PIECE**



THE  
**PARTING 2**





THE  
**PARTING LONG**

FRONT	SUPER-FRONT
SIZE	17 x 12 cm
HAIR LENGTH	45 cm

Super-Fein-Mittel-Mono mit 4 Clipsen  
 Superfine-welded-mono with 4 clips

**BROWN COLOURS**

- Espresso-Mix (2/4)
- Dark-Mocca-Mix (4/8)
- Mocca-Mix (6/10-6)
- Chocolate-Mix (8/10/27/20)

**BLOND COLOURS**

- Caramel-Root (12/27/22H+Root10)
- Vanilla-Light-Root (11/20/23-11+Root11)
- Light-Blond-Mix (15/20/23+Root11)*
- Champagne-Root (20R/23+Root10)
- Swedish-Mix (23A/25R/26)

**RED COLOURS**

- Ruby-Mix (33/32B/135/29)
- Light-Copper-Mix (30/27)

**GREY COLOURS**

- Dark-Smoke-Grey (39/43+F56)
- Pearl-Blond (101/14)



THE **PARTING LONG**



vorher  
before



# THE PARTING LONG

THE  
PARTING LONG  
*Light-Blond-Mix*



# PLATINUM HAIR

THE CASUAL *Light-Copper-Mix*  
Seite 20 / Page 20

## DAS BESTE AUS ZWEI WELTEN

PLATINUM HAAR ist ein Mix aus hochwertigem Remy Echthaar und High-Heat Kunsthaarfaser und vereint so das Beste aus zwei Welten.

### DIE VORTEILE

- 1 PLATINUM HAAR ist weich, hat eine natürliche Optik und ist von Echthaar kaum zu unterscheiden.
- 2 PLATINUM HAAR hält die Frisur dank des Memory-Effekts der hitzebeständigen Kunsthaarfaser perfekt in Form.
- 3 PLATINUM HAAR ist optimal für glatte Frisuren. Die Haarstruktur bleibt nach der Haarwäsche und bei hoher Luftfeuchtigkeit glatt.
- 4 PLATINUM HAAR benötigt weniger Pflege- und Styling-Aufwand als Echthaar.
- 5 PLATINUM HAAR ist hitzebeständig bis 180 °C.
- 6 PLATINUM HAAR ist preisgünstiger als Echthaar bei vergleichbarer Lebensdauer.

## THE BEST OF BOTH WORLDS

PLATINUM HAIR is a mix of high-quality Remy human hair and high-heat synthetic hair fibre and thus combines the best of both worlds.

### THE ADVANTAGES

- 1 PLATINUM HAIR is soft, has a natural look and is almost indistinguishable from human hair.
- 2 PLATINUM HAIR has a memory effect due to the heat-resistant synthetic hair fibre which keeps the hairstyle in perfect shape.
- 3 PLATINUM HAIR is ideal for straight hairstyles. The hair structure remains straight after washing and in high humidity.
- 4 PLATINUM HAIR requires less care and styling than human hair.
- 5 PLATINUM HAIR is heat-resistant up to 180 °C.
- 6 PLATINUM HAIR is less expensive than human hair with a comparable durability.

PLATINUM HAIR LINE  
Pflegeanleitung  
Care instructions



Belle Madame®

PLATINUM HAIR LINE

### STYLING & PFLEGE

PLATINUM HAAR wird grundlegend gepflegt und gestylt wie Echthaar. Die BELLE MADAME NATURAL HAIR CARE Pflegeserie ist für PLATINUM HAAR optimal geeignet. Die Haarstruktur kann mit Wärme im trockenen Zustand bei 160 °C verändert (geglättet bzw. gelockt), gepflegt und repariert werden.

Verfilzungen im Nacken – welche ganz normal sind – können einfach und vor allem eigenständig zu Hause mit einem Glätteisen beseitigt werden, indem die Oberfläche der Haare geglättet wird.

BELLE MADAME SOFT SPRAY oder andere silikonhaltige Produkte dürfen nicht für PLATINUM HAAR verwendet werden. Der Silikonmantel, welcher sich um die Haare legt, erschwert die Umformung und Glättung des Kunsthaaranteils.

*Detaillierte Pflegehinweise beinhaltet die PLATINUM HAIR LINE Pflegeanleitung.*

### STYLING & CARE

PLATINUM HAIR is basically styled like human hair. The BELLE MADAME NATURAL HAIR CARE range is optimally suited for PLATINUM HAIR. The hair structure can be changed (straightened or curled), cared for and repaired with heat at 160 °C when dry.

Tangles in the neck - which are completely normal – can be eliminated easily and, above all, independently at home with a straightening iron by smoothing the surface of the hair.

BELLE MADAME SOFT SPRAY or other silicone containing products must not be used for PLATINUM HAIR. The silicone cover, which lays on the hair, can hinder the transformation and smoothing of the synthetic hair portion.

*The PLATINUM HAIR LINE care instructions contain detailed care information.*

# ÜBERSICHT HAARFARBEN

## OVERVIEW HAIR COLOURS



Espresso-Mix (2/4)



Dark-Mocca (4)  
Dark-Mocca-Mix (4/8)



Mocca-Mix (6/10-6)



Chocolate-Root (8/12/30+Root4)



Chocolate-Mix (8/10/27/20)  
Chocolate-Mix-Root (8/10/27+Root8)



Medium-Blond-Mix-Root (10/12/20+Root10)  
Medium-Blond-Mix (10/12/20)



Caramel-Root (12/27/22H+Root10)



Vanilla-Light-Root (11/20/23-11+Root11)



Light-Blond-Mix (15/20/23+Root11)  
Light-Blond-Mix-Root (15/20/23+Root10)



Champagne-Root (20R/23+Root10)



Nordic-Ash-Blond (22/23-16+Root16)



Swedish-Blond-Mix (25R/22H-20+Root16)  
Swedish-Mix (23A/25R/26)



Light-Scandinavian-Mix (23/25R)



Dark-Cherry (4/133/32B)



Ruby-Mix (33/32B/135/29)



Light-Copper-Mix (30/27)



Dark-Smoke-Grey (39/43+F56)



Salt & Pepper (51/44-44)



Smoke-Grey (43/56-39)



Light-Smoke-Grey (56/53)



Blond-Grey-Root (17/101+Root18)



Pearl-Blond (101/14-14)  
Pearl-Blond-Root (101/14+Root10)

# PLATINUM HAIR

BelleMadame®

PLATINUM HAIR LINE

by DENING HAIR

© Dening Hair GmbH, Hamburg  
www.dening.de | 04.2026