

PERÜCKEN · WIGS · PERRUQUES · PELUCAS · PARRUCHE

# Belle Madame®



## NEWS 2026

by DENING HAIR 



# PERÜCKEN · WIGS



MALOU MONO SSF 4



ALMA HI SSF 6



NAOMI MONO HI SSF 8



EBBA LARGE SF 10

**SYNTHETIKHAAR  
SYNTHETIC HAIR**

**4-10**

**BOB STYLE**

MALOU MONO SSF

4-5

**LONG HAIR STYLES**

ALMA HI SSF

6-7

NAOMI MONO HI SSF

8-9

**LARGE STYLE**

EBBA LARGE SF

10

**ECHTHAAR  
HUMAN HAIR**

**11-15**

**BelleMadame**  
Natural Hair Line



LULU CRH 12



FRONTALIS RH 2.0 14

LULU CRH

12-13

FRONTALIS RH 2.0

14-15

**BelleMadame**  
PLATINUM HAIR LINE

**PLATINUM HAAR  
PLATINUM HAIR**

**16-31**



THE AUTHENTIC 18



THE POSH 20

**SHORT STYLE**

THE AUTHENTIC

18-19

**BOB STYLE**

THE POSH

20-21

**LONG HAIR STYLES**

THE CASUAL

22-23

THE SOPHISTICATED

24-25

**SMALL STYLE**

THE STARLET SMALL

26-27



THE CASUAL 22



THE SOPHISTICATED 24



THE STARLET SMALL 26

**HAARTEILE  
HAIR PIECES**

THE HAIR PIECE

28

THE PARTING 2

29

THE PARTING LONG

30-31



THE HAIR PIECE 28



THE PARTING 2 29



THE PARTING LONG 30

**ZUBEHÖR  
ACCESSORIES**

**32-35**



MALOU MONO 55F *Silver-White*

# MALOU MONO SSF

●●●●●● < 5/M

SOFT-SUPER-FRONT

## BROWN COLOURS

- Espresso (2)
- Dark-Mocca (4/6-4)
- Mocca-Brown (6/8/27R)
- Cold-Chocolate (5/8/14)
- Chocolate-Mix (8/10/27/20)

## BLOND COLOURS

- Chocolate/Cream-Root (10/27/20R+Root10)
- Honey-Toast (14/20/25R-12)
- Vanilla-Mix-Root (14/20/25R+Root10)
- Champagne-Root (22H/22+Root12)
- Nordic-Ash-Blond (22/24R-16+Root14)

## RED COLOURS

- Dark-Purple/Flame (2V/133/135)

## GREY COLOURS

- 38/39
- Salt&Pepper (44/51/60)
- 56/53-39
- 60-56-51
- Silver-White (66/60)
- Blond-Grey-Root (17/101+Root18)
- 101/14-14

360°



MALOU MONO SSF  
Vanilla-Mix-Root

# MALOU MONO SSF





ALMA  
HI  
SSF

# ALMA HI SSF

●●●○○○ ◀ M

SOFT-SUPER-FRONT & HIGH-HEAT-FIBER

HAIR LENGTH 25 - 30 cm

*Mono-Scheitel*

*Mono-Parting*

### BROWN COLOURS

- Espresso (2)
- Dark-Mocca (4/6-4)
- Mocca-Brown (6/8/27R)
- Chocolate (8/12/30)
- Chocolate-Mix (8/10/27/20)
- Dark-Ash-Blond-Mix (10/12/14/8)

### BLOND COLOURS

- Caramel-Root (12/27/20+Root8)
- Vanilla-Mix-Root (14/20/25R+Root10)
- Champagne-Root (22H/22+Root12)
- Nordic-Ash-Blond (22/24R-16+Root14)
- Swedish-Blond-Root (25R/22H+Root16)

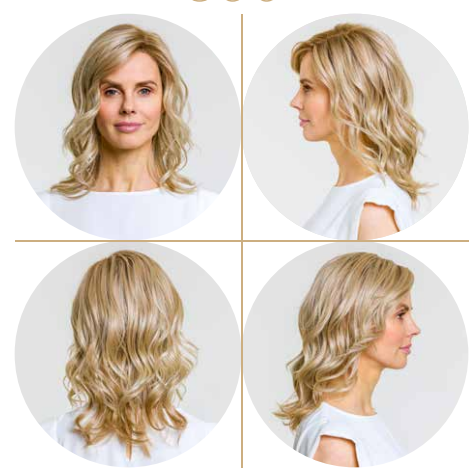
### RED COLOURS

- Dark-Purple/Flame (2V/133/135)

### GREY COLOURS

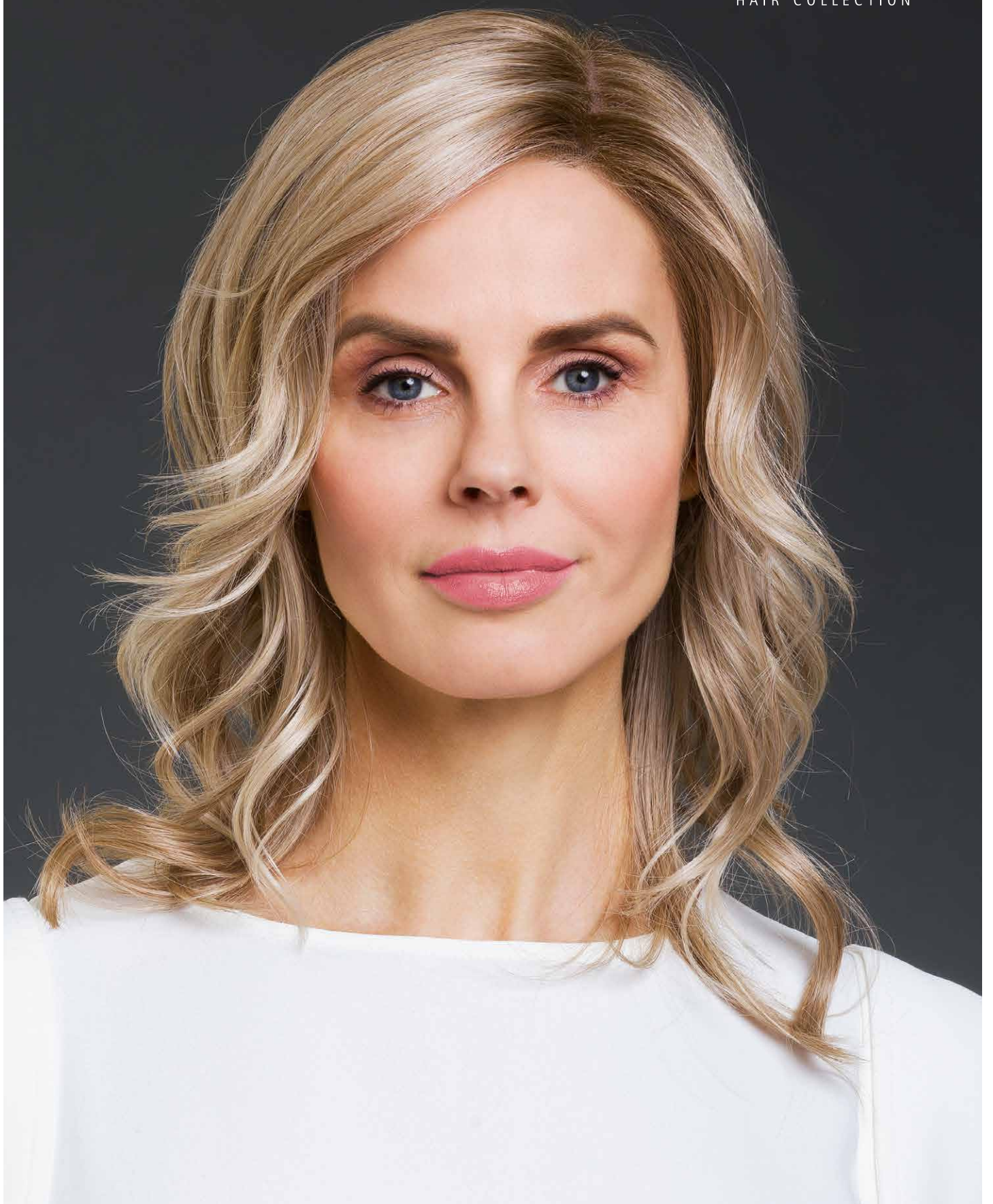
- Blond-Grey-Root (17/101+Root18)
- Platinum-Blond-Grey-Root (101/20+Root10)

360°



ALMA HI SSF  
*Nordic-Ash-Blond*

ALMA HI SSF *Dark-Purple/Flame*



ALMA HI 55F *Nordic-Ash-Blond*



# NAOMI MONO HI SSF

●●●●○◀ M

SOFT-SUPER-FRONT & HIGH-HEAT-FIBER

HAIR LENGTH 20 - 25 cm

### BROWN COLOURS

- Espresso (2)
- Dark-Mocca (4/6-4)
- Mocca-Brown (6/8/27R)
- Cold-Chocolate (5/8/14)
- Chocolate-Mix (8/10/27/20)
- Dark-Ash-Blond-Mix (10/12/14/8)

### BLOND COLOURS

- Caramel-Root (12/27/20+Root8)
- Honey-Toast (14/20/25R-12)
- Vanilla-Root (14/26+Root14)
- Champagne-Root (22H/22+Root12)
- Nordic-Ash-Blond (22/24R-16+Root14)
- Swedish-Blond-Root (25R/22H+Root16)

### RED COLOURS

- Paprika-Mix (32B/30/29)

### GREY COLOURS

- 38/39
- Salt&Pepper (44/51/60)
- Blond-Grey-Root (17/101+Root18)
- 101/14-14

# NAOMI MONO HI SSF



360°



NAOMI MONO HI SSF  
Caramel-Root

NAOMI MONO HI SSF Salt&Pepper



NAOMI MONO HI SSF *Caramel-Root*

## EBBA LARGE SF

●●○○○○ ◀ M/L

SUPER-FRONT

*Mono-Wirbel*

*Mono-Crown*

### BROWN COLOURS

Dark-Mocca (4/6-4)

Mocca (6/10/30)

Chocolate-Mix (8/27-4)

### BLOND COLOURS

Chocolate/Cream-Root (10/27/20R+Root10)

Honey-Toast (14/20/25R-12)

Vanilla-Root (14/26+Root14)

Champagne-Root (22H/22+Root12)

### RED COLOURS

Terracotta-Gold (8/27R-8)

Red-Power-Mix (135/130/4)

### GREY COLOURS

Salt&Pepper (44/51/60)

56/53-39

60-56-51

60/101

101/14-14

EBBA  
LARGE  
SF



360°



EBBA LARGE SF  
101/14-14



# Belle Madamé<sup>®</sup>

Natural Hair Line

LULU CRH *Vanilla-Root*



# LULU CRH

## LULU CRH

●●●●●● < **S/M** (53 - 55 cm)

FRONT	SUPER-FRONT
HAIR LENGTH	7.5 - 24 cm
HAIR VOLUME	100% light
HAIR QUALITY	PREMIUM-REMY-HAIR-4 100% Chinese-Remy-Hair
CAP	ANASTASIA 2 Super-Front und Mono-Top sind miteinander vernäht Lace-Front and mono-top are sewn together

### BROWN COLOURS

- Espresso (2)
- Dark-Mocca-Mix (4/8)
- Mocca-Mix (6/10-6)
- Chocolate (8/12/30)
- Chocolate-Mix (8/10/27/20)
- Medium-Ash-Blond (10/12)

### BLOND COLOURS

- Caramel-Root (12/27/22H+Root10)
- Honey-Mix (12A/25R/28)
- Vanilla-Root (14/26+Root14)
- Light-Blond-Mix (15/20/23+Root11)
- Champagne-Root (20R/23+Root10)
- Swedish-Mix (23A/26)

### RED COLOURS

- Brown-Red-Mix (6/30)
- Dark-Auburn-Mix (33/30)

### GREY COLOURS

- Dark-Smoke-Grey (39/43+F56)\*
- Smoke-Grey (43/56-39)\*
- Light-Smoke-Grey (56/53-39)\*
- Blond-Grey-Root (17/101+Root18)\*

360°



LULU CRH  
Light-Smoke-Grey

LULU CRH Light-Smoke-Grey

\* Weißanteil aus hitzebeständigem Synthetik.  
White hair made of heat-resistant synthetic fibre.



LULU CRH  
*Swedish-Mix*

LULU CRH *Vanilla-Root*

## HAARTEIL FÜR FRONTALE ALOPEZIE (Haarverlust im Stirnbereich)

Das überarbeitete FRONTALIS RH 2.0 bietet eine bessere und flexiblere Passform am Oberkopf durch elastische Dreiecke im Silikonstreifen. Die neue SOFT-SUPER-FRONT ist dünner und weicher.

Ansatz aus 3 cm SOFT-SUPER-FRONT und 2,5 cm rutschfestem weichen SILIKON-PU zum Zuschneiden.

Größenanpassung durch seitliches Klettband und verkleinerbare Dreiecke im Silikonstreifen.



# FRONTALIS RH 2.0

## HAIR PIECE FOR FRONTAL ALOPECIA (hair loss on the forehead)

Redesigned FONTALIS RH 2.0 offers a better and more flexible fit at top of head due to elastic triangles in the silicone strip. The new SOFT-SUPER-FRONT is thinner and softer.

Front made of 3 cm SOFT-SUPER-FRONT and 2.5 cm non-slip soft SILICONE PU for cutting.

Size adjustment through side Velcro strap and reduceable triangles in the silicone strip.



## FRONTALIS RH 2.0

FRONT	SOFT-SUPER-FRONT
HAIR LENGTH	23 -28 cm
HAIR QUALITY	PREMIUM-REMY-HAIR-2

### BROWN COLOURS

- Espresso (2)
- Dark-Mocca-Mix (4/8)
- Mocca-Mix (6/10-6)
- Chocolate-Mix (8/10/27/20)
- Medium-Ash-Blond (10/12)

### BLOND COLOURS

- Chocolate/Cream-Root (10/27/20R+Root8)
- Honey-Mix (12A/25R/28)
- Light-Blond-Mix (15/20/23+Root11)
- Champagne-Root (20R/23+Root10)
- Swedish-Blond-Root (23A/26+Root16)\*\*

### RED COLOURS

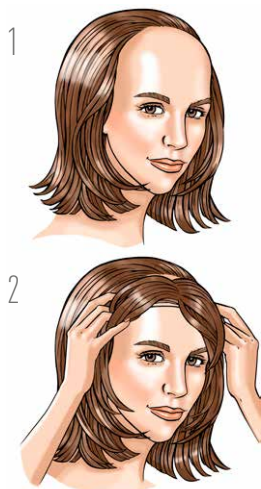
- Dark-Auburn-Mix (33/30)

### GREY COLOURS

- Brown-Grey (38/39)\*
- Dark-Smoke-Grey (39/43+F56)\*
- Smoke-Grey (43/56-39)\*
- Light-Smoke-Grey (56/53-39)\*
- Blond-Grey-Root (17/101+Root18)\*

\* Weißanteil aus hitzebeständigem Synthetik.  
White hair made of heat-resistant synthetic fibre.

\*\* Enthält 5% hitzebeständiges Synthetikhaar.  
Contains 5% heat-resistant synthetic hair.

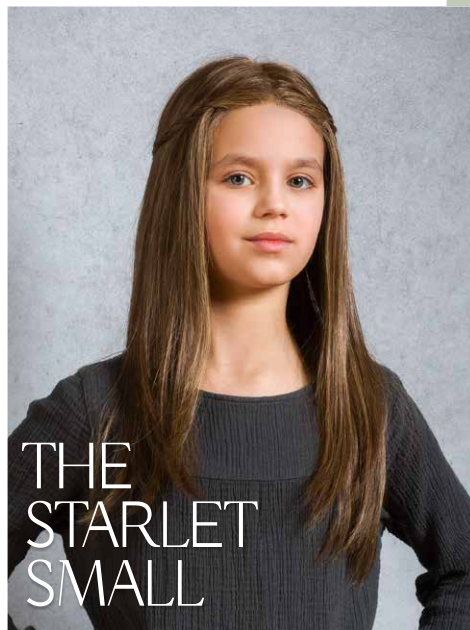
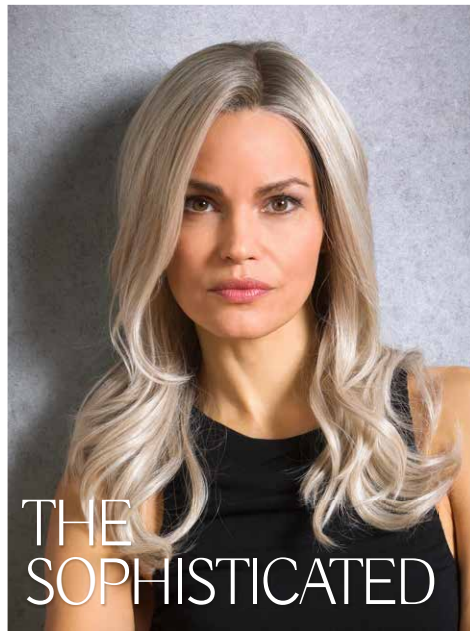
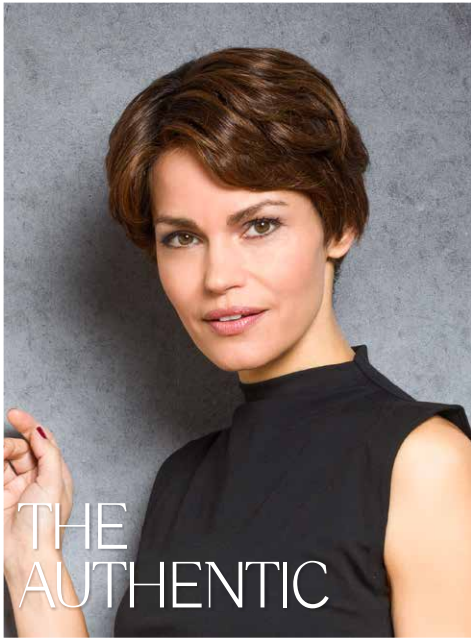


FRONTALIS RH 2.0 *Dark-Mocca-Mix*

**EXZELLENTER HAAR-MIX  
AUS HOCHWERTIGEM  
REMY ECHTHAAR UND  
HIGH-HEAT SYNTHETIKHAAR**

**EXCELLENT HAIR MIX  
OF HIGH-QUALITY  
REMY HUMAN HAIR  
AND HIGH-HEAT  
SYNTHETIC HAIR**

# PLATINUM HAIR



**PLATINUM HAIR**

SEITE  
PAGE

18

THE AUTHENTIC

SEITE  
PAGE

20

THE POSH

SEITE  
PAGE

22

THE CASUAL

SEITE  
PAGE

24

THE SOPHISTICATED

**SMALL STYLE**

SEITE  
PAGE

26

THE STARLET SMALL

**BelleMadame®**  
**PLATINUM HAIR LINE**

Belle Madame®  
PLATINUM HAIR LINE

# THE AUTHENTIC

THE AUTHENTIC *Chocolate-Root*

# THE AUTHENTIC

●●●●● < S/M (53 - 55 cm)

FRONT SOFT-SUPER-FRONT  
 Double-layer: French-Lace  
 +Hollywood-Lace

HAIR LENGTH 5-9.5cm

### BROWN COLOURS

- Dark-Mocca (4)
- Mocca-Mix (6/10-6)
- Chocolate-Root (8/12/30+Root4)
- Chocolate-Mix-Root (8/10/27+Root8)

### BLOND COLOURS

- Medium-Blond-Mix (10/12/20)
- Caramel-Root (12/27/22H+Root10)
- Light-Blond-Mix-Root (15/20/23+Root10)
- Champagne-Root (20R/23+Root10)
- Swedish-Mix (23A/25R/26)

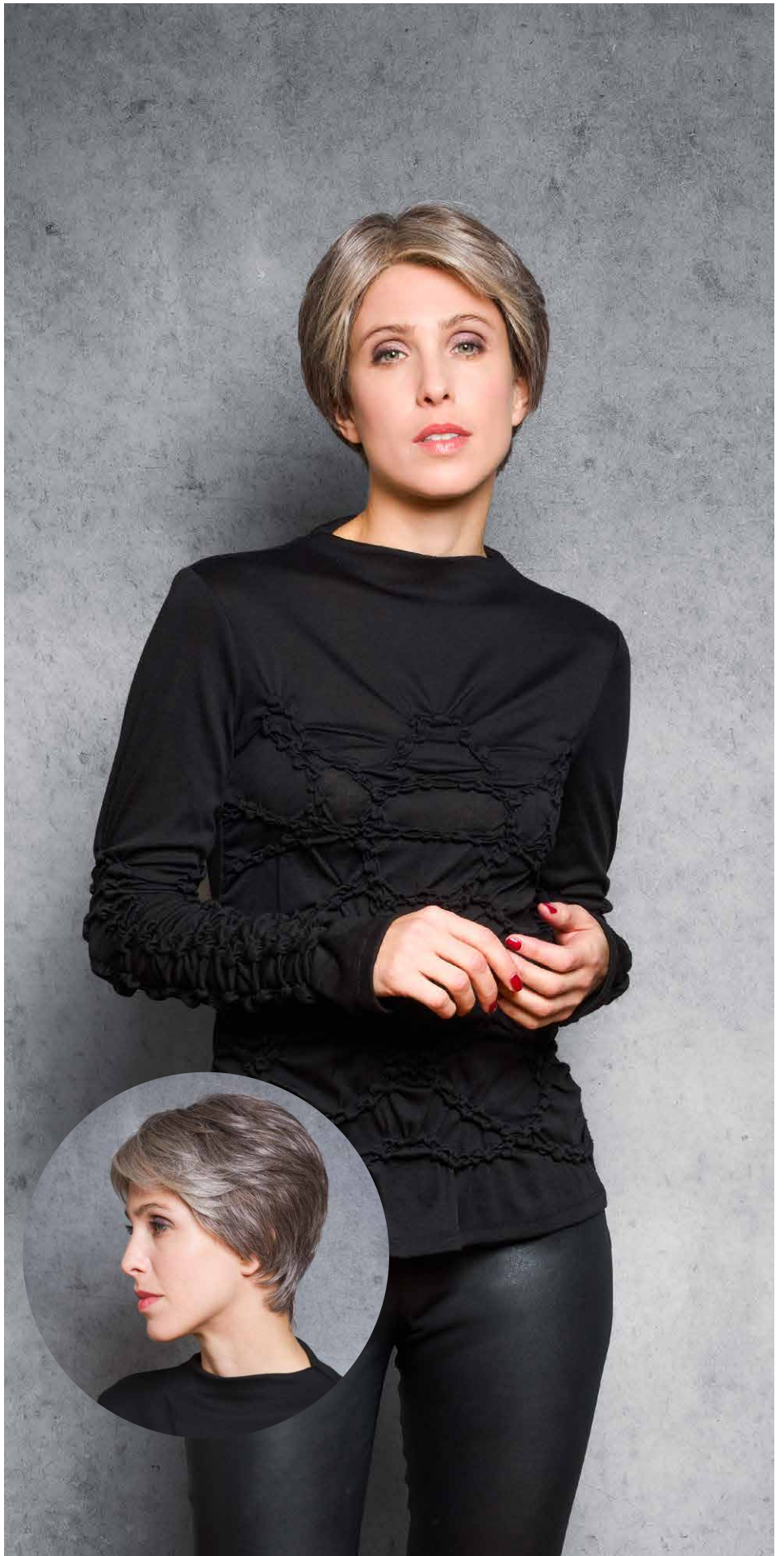
### GREY COLOURS

- Dark-Smoke-Grey (39/43+F56)
- Salt&Pepper (51/44-44)
- Smoke-Grey (43/56-39)
- Pearl-Blond-Root (101/14+Root10)

360°



THE AUTHENTIC  
 Chocolate-Root



THE AUTHENTIC Dark-Smoke-Grey



# THE POSH

●●●●●● < S/M (53 - 55 cm)

FRONT	SUPER-FRONT
HAIR LENGTH	9-24cm

### BROWN COLOURS

- Dark-Mocca (4)
- Mocca-Mix (6/10-6)
- Chocolate-Root (8/12/30+Root4)
- Chocolate-Mix-Root (8/10/27+Root8)

### BLOND COLOURS

- Medium-Blond-Mix (10/12/20)
- Caramel-Root (12/27/22H+Root10)
- Light-Blond-Mix-Root (15/20/23+Root10)
- Champagne-Root (20R/23+Root10)
- Light-Scandinavian-Mix (23/25R)

### RED COLOURS

- Ruby-Mix (33/32B/135/29)

### GREY COLOURS

- Salt&Pepper (51/44-44)
- Pearl-Blond-Root (101/14+Root10)

360°



THE POSH  
Medium-Blond-Mix

THE POSH Medium-Blond-Mix

BelleMadame®  
PLATINUM HAIR LINE

# THE POSH

THE POSH *Ruby-Mix*

BOB STYLE

21



THE CASUAL *Light-Copper-Mix*

# THE CASUAL

●●●●● < S/M (53 - 55 cm)

FRONT	SUPER-FRONT
HAIR LENGTH	15 - 30 cm

### BROWN COLOURS

- Dark-Mocca (4)
- Mocca-Mix (6/10-6)
- Chocolate-Root (8/12/30+Root4)
- Chocolate-Mix-Root (8/10/27+Root8)

### BLOND COLOURS

- Medium-Blond-Mix (10/12/20)
- Caramel-Root (12/27/22H+Root10)
- Light-Blond-Mix-Root (15/20/23+Root10)
- Champagne-Root (20R/23+Root10)
- Light-Scandinavian-Mix (23/25R)

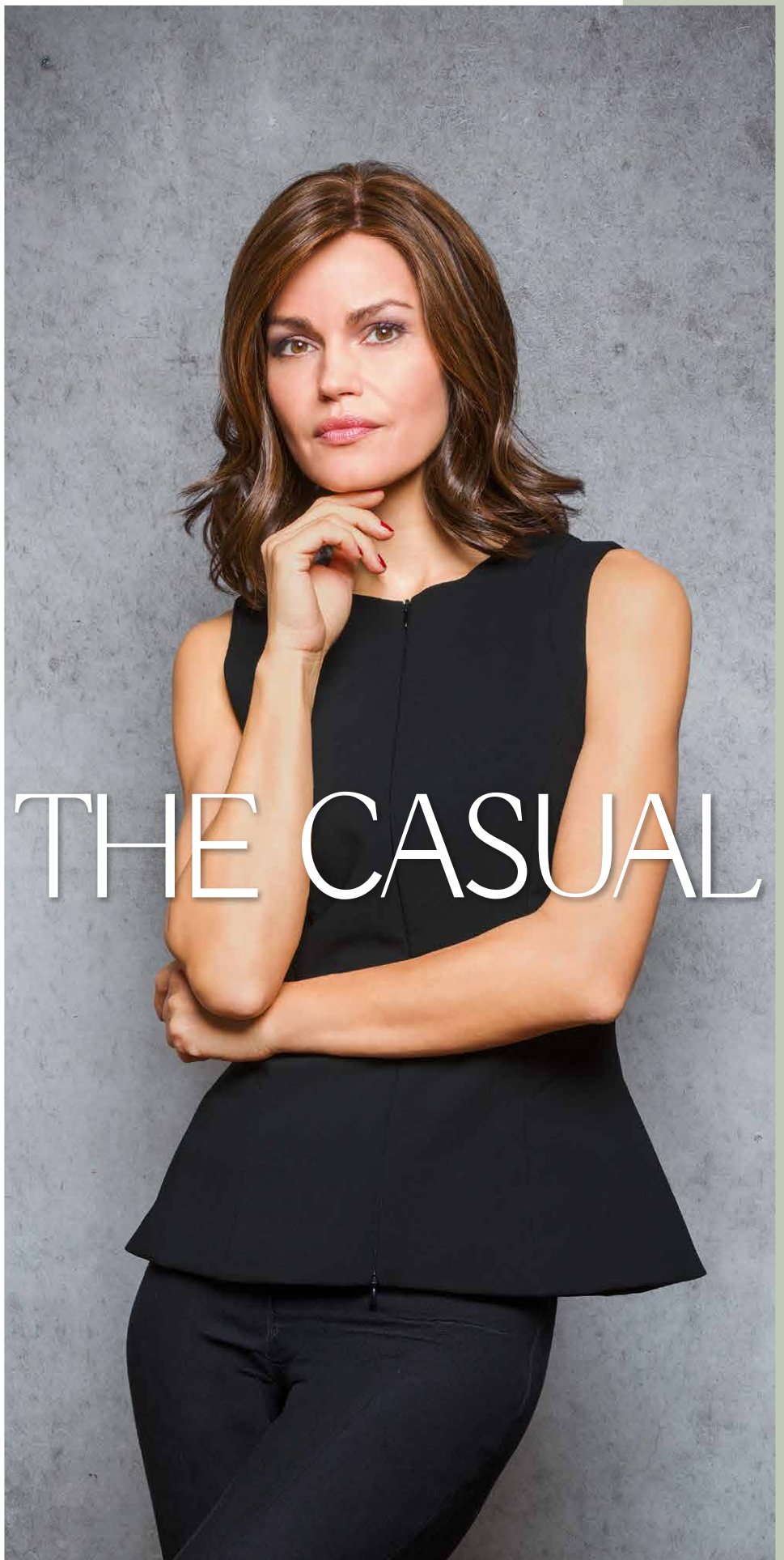
### RED COLOURS

- Light-Copper-Mix (30/27)

### GREY COLOURS

- Pearl-Blond-Root (101/14+Root10)

# THE CASUAL



360°



THE CASUAL  
Light-Copper-Mix



THE  
SOPHISTICATED

THE SOPHISTICATED *Light-Scandinavian-Mix*



THE SOPHISTICATED  
Light-Scandinavian-Mix

# THE SOPHISTICATED

●●●●● < S/M (53 - 55 cm)

FRONT SOFT-SUPER-FRONT  
Double-layer: Superfine Welded Mono  
+ Hollywood-Lace  
HAIR LENGTH 30-35cm

**BROWN COLOURS**

- Dark-Mocca (4)
- Mocca-Mix (6/10-6)
- Chocolate-Root (8/12/30+Root4)
- Chocolate-Mix-Root (8/10/27+Root8)

**BLOND COLOURS**

- Medium-Blond-Mix-Root (10/12/20+Root10)
- Light-Blond-Mix-Root (15/20/23+Root10)
- Light-Scandinavian-Mix (23/25R)

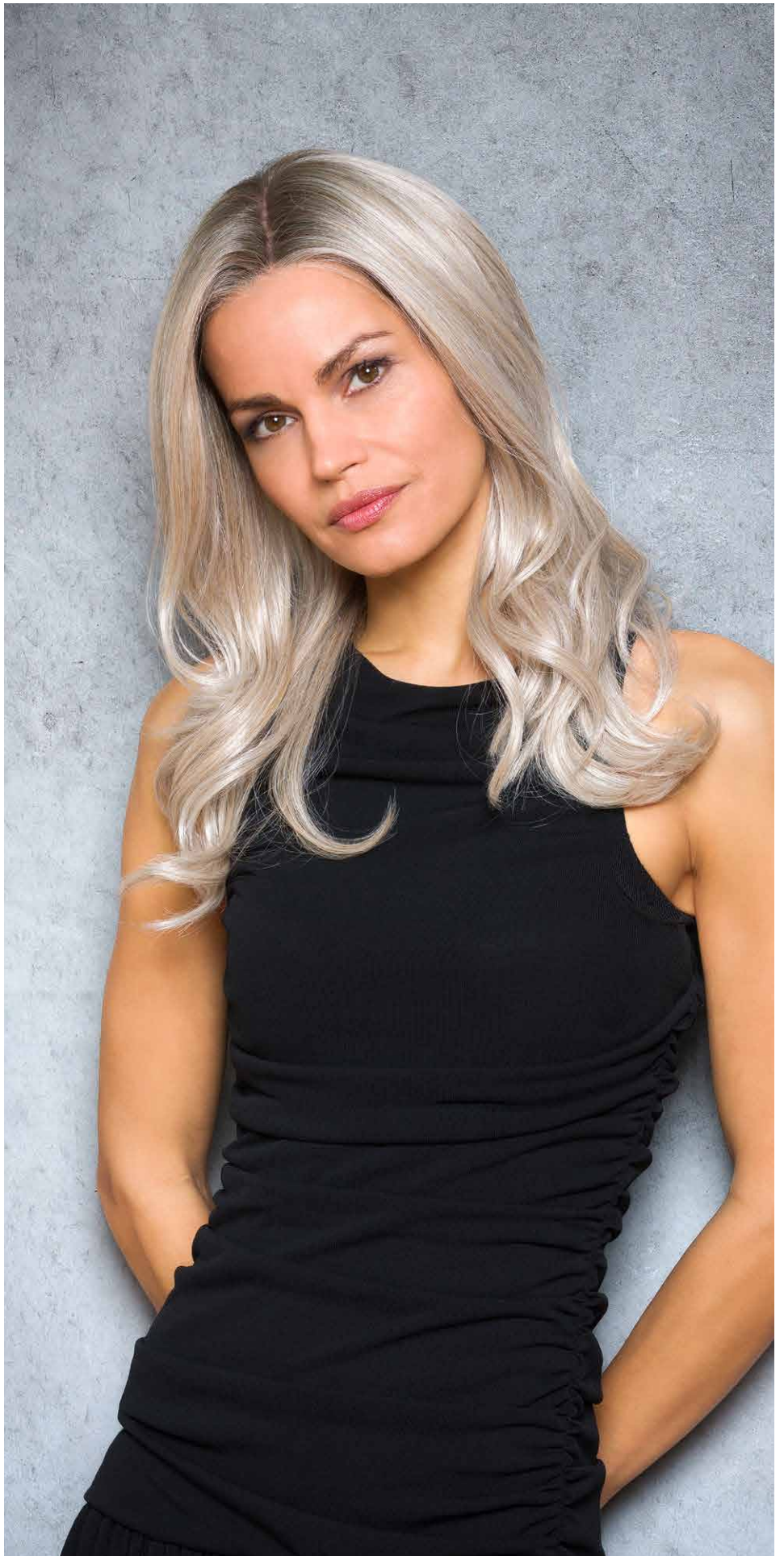
**GREY COLOURS**

- Pearl-Blond-Root (101/14+Root10)

360°



THE SOPHISTICATED  
Light-Scandinavian-Mix



THE SOPHISTICATED Pearl-Blond-Root

# THE STARLET SMALL

THE STARLET SMALL *Chocolate-Mix*

# THE STARLET SMALL

●●●●● < X5 (50 - 52 cm)

FRONT	SOFT-SUPER-FRONT Single-layer Soft-Lace-Front
HAIR LENGTH	35-40cm

### BROWN COLOURS

Dark-Mocca-Mix (4/8)  
Mocca-Mix (6/10-6)  
Chocolate-Mix (8/10/27/20)

### BLOND COLOURS

Caramel-Root (12/27/22H+Root10)  
Vanilla-Light-Root (11/20/23-11+Root11)  
Light-Blond-Mix (15/20/23+Root11)  
Champagne-Root (20R/23+Root10)  
Swedish-Mix (23A/25R/26)

### RED COLOURS

Light-Copper-Mix (30/27)

360°



THE STARLET SMALL  
Chocolate-Mix



THE STARLET SMALL *Chocolate-Mix*



## THE HAIR PIECE

FRONT	SUPER-FRONT
SIZE	17x12cm
HAIR LENGTH	17.5–22.5cm

Super-Fein-Mittel-Mono mit 4 Clipsen  
 Superfine-welded-mono with 4 clips

### BROWN COLOURS

Espresso-Mix (2/4)  
 Dark-Mocca-Mix (4/8)  
 Mocca-Mix (6/10-6)  
 Chocolate-Mix (8/10/27/20)

### BLOND COLOURS

Caramel-Root (12/27/22H+Root10)  
 Vanilla-Light-Root (11/20/23-11+Root11)  
 Light-Blond-Mix (15/20/23+Root11)  
 Champagne-Root (20R/23+Root10)  
 Swedish-Mix (23A/25R/26)

### RED COLOURS

Ruby-Mix (33/32B/135/29)  
 Light-Copper-Mix (30/27)

### GREY COLOURS

Dark-Smoke-Grey (39/43+F56)  
 Salt&Pepper (51/44-44)  
 Smoke-Grey (43/56)  
 Light-Smoke-Grey (56/53)  
 Blond-Grey-Root (17/101+Root18)  
*Pearl-Blond (101/14)*



THE HAIR PIECE



## THE PARTING 2

FRONT	SUPER-FRONT
SIZE	14x8cm
HAIR LENGTH	35cm

Super-Fein-Mittel-Mono mit 4 Clipsen  
Superfine-welded-mono with 4 clips

### BROWN COLOURS

Espresso-Mix (2/4)  
Dark-Mocca-Mix (4/8)  
Mocca-Mix (6/10-6)  
Chocolate-Mix (8/10/27/20)

### BLOND COLOURS

Caramel-Root (12/27/22H+Root10)  
Vanilla-Light-Root (11/20/23-11+Root11)  
Light-Blond-Mix (15/20/23+Root11)  
*Champagne-Root (20R/23+Root10)*  
Swedish-Mix (23A/25R/26)

### RED COLOURS

Ruby-Mix (33/32B/135/29)  
Light-Copper-Mix (30/27)

### GREY COLOURS

Dark-Smoke-Grey (39/43+F56)  
Smoke-Grey (43/56)  
Light-Smoke-Grey (56/53)  
Blond-Grey-Root (17/101+Root18)  
Pearl-Blond (101/14)



THE PARTING 2



vorher  
before



# THE PARTING LONG

THE PARTING LONG *Light-Blond-Mix*



## THE PARTING LONG

FRONT	SUPER-FRONT
SIZE	17x12cm
HAIR LENGTH	45cm

Super-Fein-Mittel-Mono mit 4 Clipsen  
 Superfine-welded-mono with 4 clips

### BROWN COLOURS

- Espresso-Mix (2/4)
- Dark-Mocca-Mix (4/8)
- Mocca-Mix (6/10-6)
- Chocolate-Mix (8/10/27/20)

### BLOND COLOURS

- Caramel-Root (12/27/22H+Root10)
- Vanilla-Light-Root (11/20/23-11+Root11)
- Light-Blond-Mix (15/20/23+Root11)**
- Champagne-Root (20R/23+Root10)
- Swedish-Mix (23A/25R/26)

### RED COLOURS

- Ruby-Mix (33/32B/135/29)
- Light-Copper-Mix (30/27)

### GREY COLOURS

- Dark-Smoke-Grey (39/43+F56)
- Pearl-Blond (101/14)

THE PARTING LONG





Art. 4028

## PARTING-TAPE

Größe / Size: **10 x 4 cm**

Inhalt / Content: **6 Stück / pieces**

Art. 4028

- Einseitiges Klebeband mit heller hautfarbener Silikonbeschichtung für den Scheitelbereich.
- Verleiht dem Scheitel der Perücke einen natürlichen Kopfhaut-Look.
- Verhindert Durchscheinen von vorhandenem oder nachwachsendem Eigenhaar.
- Dient als sanfte Schutzschicht zwischen Haut und Perückenmontur (Mono, Lace und Übergang zu Filmansatz).

### Anwendung:

In den Scheitelbereich von innen in die Perückenmontur kleben. Das Klebeband hält mehrere Haarwäschen und kann rückstandsfrei entfernt werden.

- *One-sided adhesive tape with a light skin-coloured silicone coating for the parting area.*
- *Gives the parting of the wig a natural, realistic scalp look - with or without own hair.*
- *Prevents existing or regrowing hair from shining through.*
- *Serves as a gentle protective layer between skin and wig cap (mono, lace, and connection to Lace-Front).*

### Application:

*Apply to parting area in the inside of the wig cap. The tape will last for several washes and can be removed without leaving any residue.*



*ohne Parting-Tape  
without Parting-Tape*



*mit Parting-Tape  
with Parting-Tape*





## PERÜCKENBAND RUTSCHFEST WIG BAND NON-SLIP

Größe / Size: **100 cm x 25 mm**

Art. 4030-01 beige / beige  
Art. 4030-02 schwarz / black

- Elastisches Perückenband zur Größenanpassung von Perücken.
- Einseitig gummierte Oberfläche für zuverlässigen Halt auf der Kopfhaut.
- Reparatur / Ersatz von Elastikbändern.

### Anwendung:

Zur Größenanpassung mit leichter Spannung im Nacken- oder Seitenbereich der Montur einnähen.

- *Elastic wig band to adjust the size of wigs.*
- *Rubberised surface on one side for a reliable grip on the scalp.*
- *Repair / replacement of elastic bands.*

### Application:

*Sew into the back, neck or side area of the wig cap with slight tension to adjust the size.*

Art. 4030-02  
schwarz / black

Art. 4030-01  
beige / beige



## PU-PUNKTE PU POINTS

Größe / Size: **ø 2,5 cm**  
Inhalt / Content: **10 Stück / pieces**

Art. 4093-PP

- Dünne transparente PU-Punkte zum Einnähen in die Montur für zusätzliche Klebestellen.
- Einseitig leicht auf der Haut haftend. Sorgt auch ohne Klebestreifen für einen besseren Halt.

- *Thin, transparent PU points for sewing into cap for additional adhesive surface.*
- *Slightly sticky to the skin on one side. Provides better hold even without adhesive tapes.*



Art. 4093-PP





Art. 6090-01

Art. 6090-02

## COPIC-ANSATZ-MARKER COPIC HAIRLINE MARKER

Art. 6090-01 milk chocolate  
Art. 6090-02 warm grey

- Ideal zum Färben von Haaransätzen (Root-Farben) für harmonische, natürliche Übergänge.
- Der Marker trocknet schnell und ist anschließend wisch- und wasserbeständig.
- Doppelspitze mit feiner und breiter Ausführung für präzises wie auch flächiges Arbeiten.
- Für alle Haarqualitäten geeignet, besonders empfehlenswert für Kunsthaar und Mischfasern.
- *Perfect for colouring root hairlines for harmonious, natural transitions.*
- *The marker dries quickly and is then smudge-proof and water-resistant.*
- *Dual tip with broad and fine design for precise and broad application.*
- *Suitable for all hair types, especially recommended for synthetic and mixed fibres.*



Art. 6090-02  
warm grey

Art. 6090-01  
milk chocolate

Art. 4023-02  
mittelbraun  
medium brown



Art. 4023-01  
hellbraun  
light brown

## SILIKON-BAND SILICONE BAND

Größe / Size: **S/M**

Art. 4023-01 hellbraun / light brown  
Art. 4023-02 mittelbraun / medium brown

## SILIKON-BAND LARGE SILICONE BAND LARGE

Größe / Size: **L**

Art. 4024-01 hellbraun / light brown  
Art. 4024-02 mittelbraun / medium brown

- Das Silikon-Band sorgt mit seiner flexiblen, rutschfesten Oberfläche für einen maximalen und sicheren Halt der Perücke.
- Zwei Längen sind erhältlich. Das Silikon-Band Large mit 4 cm zusätzlicher Länge passt sich auch größeren Kopfformen perfekt an.
- *The silicone band with its flexible, nonslip surface ensures maximum and secure hold of the wig.*
- *Two lengths are available. The large silicone band with an additional 4 cm in length adapts perfectly to larger head shapes.*

Art. 4024  
SILIKON-BAND LARGE



Art. 4023  
SILIKON-BAND



Art. 4015

## HAARTEIL-STÄNDER

### HAIR PIECE STAND

Höhe / Height: **34-50cm**

Art. 4015  
schwarz / black

- Ideal zum Trocknen und Aufbewahren von Haarteilen, Toppert und Toupetts.
- *Perfect for drying and storing of hair pieces, toppers and toupees.*



## 4-TIP AUGENBRAUENSTIFT

### 4-TIP EYEBROW PEN

Art. 6087-01 grau / grey  
Art. 6087-02 mittelbraun / medium brown

- Wasserfester Augenbrauenstift mit 3D Effekt zum Nachzeichnen der Augenbrauenhaare.
- Füllt bestehende Augenbrauen auf und zeichnet eine natürliche Form.
- Der Stift ist perfekt kombinierbar mit dem BELLE MADAME Augenbrauenpuder, auch wenn keine eigenen Augenbrauen vorhanden sind.

Art. 6087-01  
grau / grey



Art. 6087-02  
mittelbraun / medium brown



- *Waterproof eyebrow pen with 3D effect for drawing eyebrow hairs.*
- *Filling in existing eyebrows and drawing a natural shape.*
- *The pen can be perfectly combined with BELLE MADAME eyebrow powder, even if there are no own eyebrows.*

## HOLZBÜRSTE MIT HOLZSTIFTEN

### WOODEN BRUSH WITH WOODEN PINS

Art. 4035

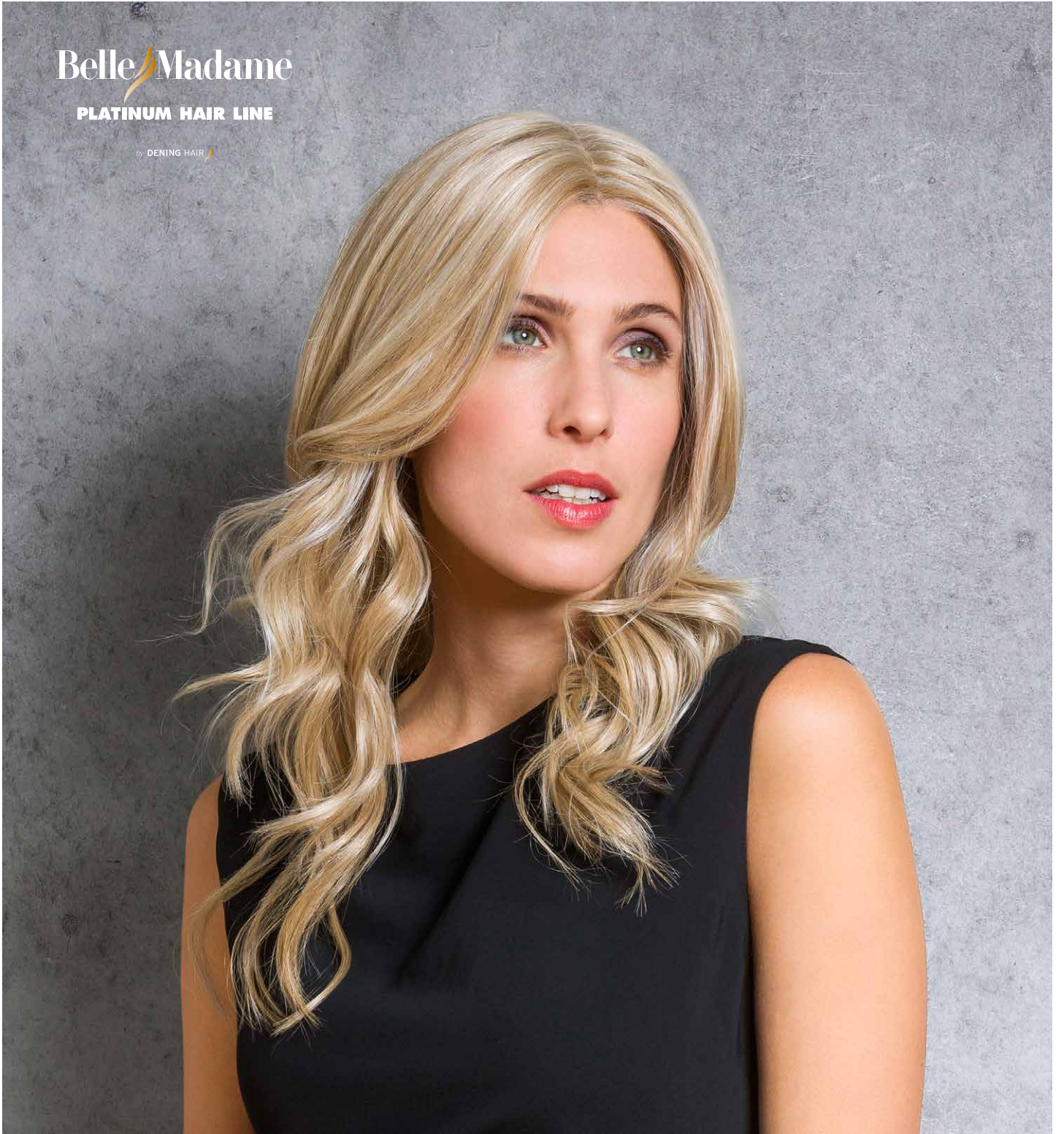


- Holzbürste mit hochwertigen Holzborsten.
- Schonen das Haar und die Montur.
- Für Echthaar-Perücken und -Haarteile.

- *Wooden brush with high-quality wooden pins.*
- *Gentle for both the hair and the cap.*
- *For human hair wigs and hair pieces.*

BelleMadame®  
PLATINUM HAIR LINE

by DENING HAIR



THE SOPHISTICATED *Light-Scandinavian-Mix* ↻ Seite 24 / Page 24