


PERÜCKEN · WIGS · PERRUQUES · PELUCAS · PARRUCHE

# Belle Madama<sup>®</sup>

**PLATINUM HAIR LINE**



by DENING HAIR 

**EXZELLENTER  
HAAR-MIX  
FÜR HÖCHSTE  
ANSPRÜCHE**

LIEBE  
KUNDINNEN,  
LIEBE  
KUNDEN,

High-Tech trifft auf Natur, ein Gegensatz, der sich beim PLATINUM Haar perfekt ergänzt. Die Verbindung von hochwertigem Echthaar und hitzebeständiger High-Tech Kunsthaarfaser kombiniert die Vorteile beider Haarqualitäten. Daraus ergibt sich besonders weiches und natürlich anmutendes Haar mit besten Pflegeeigenschaften.

Geprägt durch unsere Firmenphilosophie und unsere Erfahrung aus über 50 Jahren, ist die BELLE MADAME PLATINUM HAIR LINE mit höchsten Ansprüchen in Bezug auf Qualität und Optik entwickelt worden. Die Modelle dieser Kollektion bestechen außerdem durch ihre perfekte Schnittführung und traumhaften Colorationen.

Entdecken Sie die BELLE MADAME PLATINUM HAIR LINE und freuen Sie sich auf eine traumhafte Kollektion.

IHR  
ALEXANDER DENING  
& TEAM

**EXCELLENT  
HAIR MIX  
TO MEET THE  
HIGHEST  
DEMANDS**

DEAR  
CLIENTS,

High-tech meets nature, a contrast which perfectly complements each other in PLATINUM Hair. The combination of high-quality human hair and heat-resistant high-tech synthetic fiber combines the advantages of both types of hair. This produces particularly soft and natural looking hair with the best features for easy hair care.

Influenced by our company philosophy and our experience from more than 50 years, the BELLE MADAME PLATINUM HAIR LINE has been developed to the highest specifications for quality and look. The models in this collection win over with their perfect cut and stunning colorations.

Discover the BELLE MADAME PLATINUM HAIR LINE and look forward to a fantastic collection.

YOURS  
ALEXANDER DENING  
& TEAM

**EXCELLENT  
MÉLANGE DE  
CHEVEUX A LA  
HAUTEUR DES  
EXIGENCES LES  
PLUS STRICTES**

CHÈRES  
CLIENTES,  
CHERS  
CLIENTS,

Mariage parfait entre haute technologie et fibres naturelles, un contraste parfaitement réussi pour la gamme capillaire PLATINUM. La parfaite alliance d'un cheveu naturel de grande qualité avec une fibre synthétique high-tech résistante à la chaleur associe les avantages des deux fibres capillaires, pour des cheveux particulièrement soyeux, d'apparence naturelle et très faciles d'entretien.

Fidèle à notre philosophie d'entreprise et reposant sur notre expérience de plus de 50 ans, la gamme BELLE MADAME PLATINUM HAIR LINE a été développée pour répondre aux exigences les plus élevées en termes de qualité et d'esthétique. Les modèles de cette collection séduisent également par leur coupe parfaite et leurs couleurs époustouflantes.

Découvrez la BELLE MADAME PLATINUM HAIR LINE et profitez d'une collection exceptionnelle.

ALEXANDER DENING  
ET SON ÉQUIPE

**EXCELENTE  
MEZCLA DE  
CABELLO CON  
LAS MÁXIMAS  
EXPECTATIVAS**

ESTIMADAS  
CLIENTAS,  
ESTIMADOS  
CLIENTES,

Alta tecnología y naturaleza: un contraste que se complementa a la perfección con el pelo PLATINUM. La unión de pelo natural de alta calidad y fibras sintéticas de alta tecnología combina las ventajas de ambas fibras capilares. De esto resulta un pelo especialmente suave y de aspecto natural con las mejores características de cuidado.

Basada en filosofía empresarial y nuestros más de 50 años de experiencia, la BELLE MADAME PLATINUM HAIR LINE ha sido desarrollada con los máximos requisitos de calidad y estética. Además, los modelos de esta colección destacan por su perfecto corte y cautivadoras coloraciones.

Descubra la BELLE MADAME PLATINUM HAIR LINE y disfrute de una colección de ensueño.

ALEXANDER DENING  
& EQUIPO

**ECCELLENTE  
MIX DI  
CAPELLI  
PER LE  
MASSIME  
ESIGENZE**

GENTILI  
CLIENTI,

L'alta tecnologia incontra la natura, due opposti che si completano perfettamente nel caso dei capelli PLATINUM. La combinazione tra capelli veri di alta qualità e la fibra sintetica termoresistente ad alta tecnologia coniuga i vantaggi di entrambe le fibre capillari. Il risultato sono capelli particolarmente morbidi e dall'aspetto naturale con ottime caratteristiche di manutenzione.

Grazie alla nostra filosofia aziendale e alla nostra esperienza di oltre 50 anni, la BELLE MADAME PLATINUM HAIR LINE è stata sviluppata per soddisfare le esigenze più elevate in termini di qualità e aspetto. I modelli di questa collezione seducono anche grazie ai loro tagli perfetti e ai loro magnifici colori.

Scopra la BELLE MADAME PLATINUM HAIR LINE e si lasci incantare da una fantastica collezione.

IL VOSTRO  
ALEXANDER DENING  
& TEAM

**Belle Madame®**  
**PLATINUM HAIR LINE**

by DENING HAIR



# INHALT CONTENTS



## PLATINUM HAIR LINE PERÜCKEN / WIGS

THE <b>SWIFT</b>	<b>4-5</b>
THE <b>CLASSIC</b>	<b>6-7</b>
THE <b>SPLENDID</b>	<b>8-9</b>
THE <b>CHARMING</b>	<b>10-11</b>
THE <b>ELEGANT</b>	<b>12-13</b>
THE <b>GRACE</b>	<b>14-15</b>
THE <b>DELIGHT</b>	<b>16-17</b>
THE <b>STARLET</b>	<b>18-19</b>
THE <b>GLAMOROUS</b>	<b>20-21</b>
THE <b>ELEGANT LARGE</b>	<b>22</b>
THE <b>STARLET LARGE</b>	<b>23</b>

## HAARTEILE HAIR PIECES

THE <b>TOP PIECE</b>	<b>24-26</b>
THE <b>PARTING</b>	<b>27</b>

QUALITY & CARE <b>QUALITÄT &amp; PFLEGE</b>	<b>28-29</b>
--	--------------

OVERVIEW HAIR COLOURS <b>ÜBERSICHT HAARFARBEN</b>	<b>30</b>
---	-----------

<b>INDEX</b>	<b>31</b>
--------------	-----------



Belle Madame®

PLATINUM HAIR LINE

THE SWIFT

THE SWIFT  
Caramel-Root



THE SWIFT  
Pearl-Blond-Root



THE SWIFT  
Salt&Pepper

## THE SWIFT

●●●●○ < S/M (53-55 cm)

SUPER-FRONT

HAARLÄNGE / HAIR LENGTH 5-7 cm

### BROWN COLOURS

Dark-Mocca (4)

Mocca-Mix (6/10-6)

Chocolate-Mix-Root (8/10/27+Root8)

### BLOND COLOURS

Medium-Blond-Mix-Root (10/12/20+Root10)

Caramel-Root (12/27/22H+Root10)

Light-Blond-Mix-Root (15/20/23+Root10)

Champagne-Root (20R/23+Root10)

Swedish-Mix (23A/25R/26)

### RED COLOURS

Ruby-Mix (33/32B/135/29)

Light-Copper-Mix (30/27)

### GREY COLOURS

Dark-Smoke-Grey (39/43+F56)

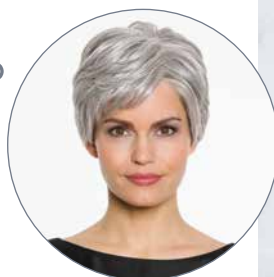
Salt&Pepper (51/44-44)

Smoke-Grey (43/56-39)

Pearl-Blond-Root (101/14+Root10)

360°

THE SWIFT  
Salt&Pepper





## THE CLASSIC

●●●●● < S (52 - 54 cm)

SUPER-FRONT

HAARLÄNGE / HAIR LENGTH 7 - 12,5 cm

### BROWN COLOURS

Espresso-Mix (2/4)

Dark-Mocca-Mix (4/8)

Mocca-Mix (6/10-6)

Chocolate-Mix (8/10/27/20)

### BLOND COLOURS

Medium-Blond-Mix-Root (10/12/20+Root10)

Caramel-Root (12/27/22H+Root10)

Vanilla-Light-Root (11/20/23-11+Root11)

Light-Blond-Mix (15/20/23+Root11)

Champagne-Root (20R/23+Root10)

Nordic-Ash-Blond (22/23-16+Root16)

### RED COLOURS

Ruby-Mix (33/32B/135/29)

Light-Copper-Mix (30/27)

### GREY COLOURS

Dark-Smoke-Grey (39/43+F56)

Salt&Pepper (51/44-44)

Smoke-Grey (43/56-39)

Pearl-Blond (101/14-14)



THE CLASSIC  
*Smoke-Grey*



# THE CLASSIC

Belle Madame®

PLATINUM HAIR LINE



THE CLASSIC  
*Champagne-Root*

360°

THE CLASSIC  
*Champagne-Root*





THE SPLENDID

THE SPLENDID  
*Light-Blond-Mix-Root*



# THE SPLENDID

●●●●○ < S/M (53 - 55 cm)

SOFT SUPER-FRONT  
*Lace-Front = Swiss Lace*

HAARLÄNGE / HAIR LENGTH 5 - 18 cm

## BROWN COLOURS

Dark-Mocca (4)

Mocca-Mix (6/10-6)

Chocolate-Mix-Root (8/10/27+Root8)

## BLOND COLOURS

Medium-Blond-Mix-Root (10/12/20+Root10)

Caramel-Root (12/27/22H+Root10)

Light-Blond-Mix-Root (15/20/23+Root10)

Champagne-Root (20R/23+Root10)

Swedish-Mix (23A/25R/26)

## RED COLOURS

Ruby-Mix (33/32B/135/29)

Light-Copper-Mix (30/27)

## GREY COLOURS

Dark-Smoke-Grey (39/43+F56)

Salt&Pepper (51/44-44)

Pearl-Blond-Root (101/14+Root10)

# 360°

THE SPLENDID  
*Light-Blond-Mix-Root*



THE SPLENDID  
*Chocolate-Mix-Root*





BelleMadame®  
PLATINUM HAIR LINE

THE CHARMING

THE CHARMING  
*Caramel-Root*





## THE CHARMING

●●●●● < S/M (53 - 55 cm)  
 SUPER-FRONT  
 HAARLÄNGE / HAIR LENGTH 5 - 17,5 cm

### BROWN COLOURS

- Espresso-Mix (2/4)
- Dark-Mocca-Mix (4/8)
- Mocca-Mix (6/10-6)
- Chocolate-Mix (8/10/27/20)

### BLOND COLOURS

- Caramel-Root (12/27/22H+Root10)
- Vanilla-Light-Root (11/20/23-11+Root11)
- Light-Blond-Mix (15/20/23+Root11)
- Champagne-Root (20R/23+Root10)
- Nordic-Ash-Blond (22/23-16+Root16)
- Swedish-Blond-Mix (25R/22H-20+Root16)

### RED COLOURS

- Ruby-Mix (33/32B/135/29)
- Light-Copper-Mix (30/27)

### GREY COLOURS

- Dark-Smoke-Grey (39/43+F56)
- Smoke-Grey (43/56-39)
- Blond-Grey-Root (17/101+Root18)

360°

THE CHARMING  
 Chocolate-Mix







THE ELEGANT  
*Light-Blond-Mix*

THE ELEGANT



THE ELEGANT LARGE  Seite 22 / Page 22

## THE ELEGANT

●●●●● < S/M (53 - 55 cm)

SUPER-FRONT

HAARLÄNGE / HAIR LENGTH 14 - 32 cm

### BROWN COLOURS

Espresso-Mix (2/4)

Dark-Mocca-Mix (4/8)

Mocca-Mix (6/10-6)

Chocolate-Mix (8/10/27/20)

### BLOND COLOURS

Caramel-Root (12/27/22H+Root10)

Vanilla-Light-Root (11/20/23-11+Root11)

Light-Blond-Mix (15/20/23+Root11)

Champagne-Root (20R/23+Root10)

Nordic-Ash-Blond (22/23-16+Root16)

Swedish-Blond-Mix (25R/22H-20+Root16)

### RED COLOURS

Dark-Cherry (4/133/32B)

Ruby-Mix (33/32B/135/29)

Light-Copper-Mix (30/27)

### GREY COLOURS

Dark-Smoke-Grey (39/43+F56)

Smoke-Grey (43/56-39)

Blond-Grey-Root (17/101+Root18)



360°

THE ELEGANT  
Dark-Mocca-Mix



THE GRACE

THE GRACE  
*Vanilla-Light-Root*

THE SPLENDID  
*Light-Gold-Mix-Root*



# THE GRACE

●●●●● < S/M (53 - 55 cm)

SUPER-FRONT

HAARLÄNGE / HAIR LENGTH 35 cm

## BROWN COLOURS

Espresso-Mix (2/4)

Dark-Mocca-Mix (4/8)

Mocca-Mix (6/10-6)

Chocolate-Mix (8/10/27/20)

## BLOND COLOURS

Caramel-Root (12/27/22H+Root10)

Vanilla-Light-Root (11/20/23-11+Root11)

Light-Blond-Mix (15/20/23+Root11)

Champagne-Root (20R/23+Root10)

Nordic-Ash-Blond (22/23-16+Root16)

Swedish-Blond-Mix (25R/22H-20+Root16)

## RED COLOURS

Ruby-Mix (33/32B/135/29)

Light-Copper-Mix (30/27)

## GREY COLOURS

Pearl-Blond (101/14-14)

# 360°

THE GRACE  
Vanilla-Light-Root



THE GRACE  
Caramel-Root



## THE DELIGHT

●●●○○○ < S (52 - 54 cm)

SUPER-FRONT

*Mono-Scheitel / Mono-Parting*

HAARLÄNGE / HAIR LENGTH 18 - 33 cm

### BROWN COLOURS

Espresso-Mix (2/4)

Dark-Mocca-Mix (4/8)

Mocca-Mix (6/10-6)

Chocolate-Mix (8/10/27/20)

### BLOND COLOURS

Caramel-Root (12/27/22H+Root10)

Vanilla-Light-Root (11/20/23-11+Root11)

Light-Blond-Mix (15/20/23+Root11)

Champagne-Root (20R/23+Root10)

Nordic-Ash-Blond (22/23-16+Root16)

Swedish-Blond-Mix (25R/22H-20+Root16)

### RED COLOURS

Ruby-Mix (33/32B/135/29)

Light-Copper-Mix (30/27)

### GREY COLOURS

Pearl-Blond (101/14-14)

THE DELIGHT  
*Pearl-Blond*



# 360°

THE DELIGHT  
*Nordic-Ash-Blond*



THE DELIGHT

Belle Madame®

PLATINUM HAIR LINE



THE DELIGHT  
*Nordic-Ash-Blond*





THE STARLET  
*Swedish-Blond-Mix*

THE STARLET



THE STARLET  
Mocca-Mix

THE STARLET LARGE ↻ Seite 23 / Page 23

## THE STARLET

●●●●● < S/M (53 - 55 cm)

SUPER-FRONT

HAARLÄNGE / HAIR LENGTH 35 - 40 cm

### BROWN COLOURS

Espresso-Mix (2/4)

Dark-Mocca-Mix (4/8)

Mocca-Mix (6/10-6)

Chocolate-Mix (8/10/27/20)

### BLOND COLOURS

Caramel-Root (12/27/22H+Root10)

Vanilla-Light-Root (11/20/23-11+Root11)

Light-Blond-Mix (15/20/23+Root11)

Champagne-Root (20R/23+Root10)

Nordic-Ash-Blond (22/23-16+Root16)

Swedish-Blond-Mix (25R/22H-20+Root16)

### RED COLOURS

Dark-Cherry (4/133/32B)

Ruby-Mix (33/32B/135/29)

Light-Copper-Mix (30/27)

360°

THE STARLET  
Light-Copper-Mix





Belle Madame®

PLATINUM HAIR LINE

THE GLAMOROUS

THE GLAMOROUS  
Vanilla-Light-Root



# THE GLAMOROUS

●●●●● < S/M (53 - 55 cm)

SUPER-FRONT

HAARLÄNGE / HAIR LENGTH 45 cm

## BROWN COLOURS

Espresso-Mix (2/4)

Dark-Mocca-Mix (4/8)

Mocca-Mix (6/10-6)

Chocolate-Mix (8/10/27/20)

## BLOND COLOURS

Caramel-Root (12/27/22H+Root10)

Vanilla-Light-Root (11/20/23-11+Root11)

Light-Blond-Mix (15/20/23+Root11)

Champagne-Root (20R/23+Root10)

Nordic-Ash-Blond (22/23-16+Root16)

Swedish-Blond-Mix (25R/22H-20+Root16)

## RED COLOURS

Ruby-Mix (33/32B/135/29)

Light-Copper-Mix (30/27)

# 360°

THE GLAMOROUS  
Vanilla-Light-Root



THE GLAMOROUS  
Espresso-Mix



## THE ELEGANT LARGE

●●●●● < L/XL (57 - 59 cm)

SUPER-FRONT

HAARLÄNGE / HAIR LENGTH 14 - 32 cm

### BROWN COLOURS

Espresso-Mix (2/4)

Dark-Mocca-Mix (4/8)

Mocca-Mix (6/10-6)

Chocolate-Mix (8/10/27/20)

### BLOND COLOURS

Caramel-Root (12/27/22H+Root10)

Vanilla-Light-Root (11/20/23-11+Root11)

Light-Blond-Mix (15/20/23+Root11)

Champagne-Root (20R/23+Root10)

Nordic-Ash-Blond (22/23-16+Root16)

Swedish-Blond-Mix (25R/22H-20+Root16)

### RED COLOURS

Ruby-Mix (33/32B/135/29)

Light-Copper-Mix (30/27)

### GREY COLOURS

Smoke-Grey (43/56-39)

Pearl-Blond (101/14-14)




# 360°

THE ELEGANT LARGE  
Chocolate-Mix

THE ELEGANT LARGE  
Chocolate-Mix



THE STARLET  Seite 18 / Page 18

## THE STARLET LARGE

●●●●● < L (56 - 58 cm)

SUPER-FRONT

HAARLÄNGE / HAIR LENGTH 35 - 40 cm

### BROWN COLOURS

Espresso-Mix (2/4)

Dark-Mocca-Mix (4/8)

Mocca-Mix (6/10-6)

Chocolate-Mix (8/10/27/20)

### BLOND COLOURS

Caramel-Root (12/27/22H+Root10)

Vanilla-Light-Root (11/20/23-11+Root11)

Light-Blond-Mix (15/20/23+Root11)

Champagne-Root (20R/23+Root10)

Nordic-Ash-Blond (22/23-16+Root16)

Swedish-Blond-Mix (25R/22H-20+Root16)

### RED COLOURS

Ruby-Mix (33/32B/135/29)

Light-Copper-Mix (30/27)



THE STARLET LARGE  
Caramel-Root





# HAIR PIECES

## HAARTEILE





THE TOP PIECE  
*Mocca-Mix*





## THE **TOP PIECE**

GRÖSSE / SIZE 16x14 cm  
HAARLÄNGE / HAIR LENGTH 30 cm

Fein-Mittel-Mono-Scheitel mit  
4 Clipsen und Film-Ansatz.  
Fine-Welded-Mono-Parting with  
4 clips and Lace-Front.

### **BROWN COLOURS**

Espresso-Mix (2/4)  
Dark-Mocca-Mix (4/8)  
Mocca-Mix (6/10-6)  
Chocolate-Mix (8/10/27/20)

### **BLOND COLOURS**

Caramel-Root (12/27/22H+Root10)  
Vanilla-Light-Root (11/20/23-11+Root11)  
Light-Blond-Mix (15/20/23+Root11)  
Champagne-Root (20R/23+Root10)  
Nordic-Ash-Blond (22/23-16+Root16)  
Swedish-Blond-Mix (25R/22H-20+Root16)

### **RED COLOURS**

Ruby-Mix (33/32B/135/29)  
Light-Copper-Mix (30/27)

### **GREY COLOURS**

Dark-Smoke-Grey (39/43+F56)  
Smoke-Grey (43/56)  
Blond-Grey-Root (17/101+Root18)



## THE **TOP PIECE**





## THE PARTING

GRÖSSE / SIZE 13 x 8 cm  
 HAARLÄNGE / HAIR LENGTH 30 cm

Fein-Mittel-Mono-Scheitel mit  
 4 Clipsen und Film-Ansatz.  
 Fine-Welded-Mono-Parting with  
 4 clips and Lace-Front.

### BROWN COLOURS

Espresso-Mix (2/4)  
 Dark-Mocca-Mix (4/8)  
 Mocca-Mix (6/10-6)  
 Chocolate-Mix (8/10/27/20)

### BLOND COLOURS

Caramel-Root (12/27/22H+Root10)  
 Vanilla-Light-Root (11/20/23-11+Root11)  
 Light-Blond-Mix (15/20/23+Root11)  
 Champagne-Root (20R/23+Root10)  
 Nordic-Ash-Blond (22/23-16+Root16)  
 Swedish-Blond-Mix (25R/22H-20+Root16)

### RED COLOURS

Ruby-Mix (33/32B/135/29)  
 Light-Copper-Mix (30/27)

### GREY COLOURS

Dark-Smoke-Grey (39/43+F56)  
 Smoke-Grey (43/56)  
 Blond-Grey-Root (17/101+Root18)

# THE PARTING



Belle Madame®

PLATINUM HAIR LINE

# PLATINUM HAIR

THE GLAMOROUS  
*Vanilla-Light-Root*



## DAS BESTE AUS ZWEI WELTEN

PLATINUM HAAR ist ein Mix aus hochwertigem Remy Echthaar und High-Heat Kunsthaarfaser und vereint so das Beste aus zwei Welten.

### DIE VORTEILE

- 1 PLATINUM HAAR ist weich, hat eine natürliche Optik und ist von Echthaar kaum zu unterscheiden.
- 2 PLATINUM HAAR hält die Frisur dank des Memory-Effekts der hitzebeständigen Kunsthaarfaser perfekt in Form.
- 3 PLATINUM HAAR ist optimal für glatte Frisuren. Die Haarstruktur bleibt nach der Haarwäsche und bei hoher Luftfeuchtigkeit glatt.
- 4 PLATINUM HAAR benötigt weniger Pflege- und Styling-Aufwand als Echthaar.
- 5 PLATINUM HAAR ist hitzebeständig bis 180 °C.
- 6 PLATINUM HAAR ist preisgünstiger als Echthaar bei vergleichbarer Lebensdauer.

## THE BEST OF BOTH WORLDS

PLATINUM HAIR is a mix of high-quality Remy human hair and high-heat synthetic hair fibre and thus combines the best of both worlds.

### THE ADVANTAGES

- 1 PLATINUM HAIR is soft, has a natural look and is almost indistinguishable from human hair.
- 2 PLATINUM HAIR has a memory effect due to the heat-resistant synthetic hair fibre which keeps the hairstyle in perfect shape.
- 3 PLATINUM HAIR is ideal for straight hairstyles. The hair structure remains straight after washing and in high humidity.
- 4 PLATINUM HAIR requires less care and styling than human hair.
- 5 PLATINUM HAIR is heat-resistant up to 180 °C.
- 6 PLATINUM HAIR is less expensive than human hair with a comparable durability.

PLATINUM HAIR LINE  
Pflegeanleitung  
Care instructions



Belle Madame®

PLATINUM HAIR LINE

### STYLING & PFLEGE

PLATINUM HAAR wird grundlegend gepflegt und gestylt wie Echthaar. Die BELLE MADAME NATURAL HAIR CARE Pflegeserie ist für PLATINUM HAAR optimal geeignet. Die Haarstruktur kann mit Wärme im trockenen Zustand bei 160 °C verändert (geglättet bzw. gelockt), gepflegt und repariert werden.

Verfilzungen im Nacken – welche ganz normal sind – können einfach und vor allem eigenständig zu Hause mit einem Glätteisen beseitigt werden, indem die Oberfläche der Haare geglättet wird.

BELLE MADAME SOFT SPRAY oder andere silikonhaltige Produkte dürfen nicht für PLATINUM HAAR verwendet werden. Der Silikonmantel, welcher sich um die Haare legt, erschwert die Umformung und Glättung des Kunsthaaranteils.

*Detaillierte Pflegehinweise beinhaltet die PLATINUM HAIR LINE Pflegeanleitung.*

### STYLING & CARE

PLATINUM HAIR is basically styled like human hair. The BELLE MADAME NATURAL HAIR CARE range is optimally suited for PLATINUM HAIR. The hair structure can be changed (straightened or curled), cared for and repaired with heat at 160 °C when dry.

Tangles in the neck - which are completely normal – can be eliminated easily and, above all, independently at home with a straightening iron by smoothing the surface of the hair.

BELLE MADAME SOFT SPRAY or other silicone containing products must not be used for PLATINUM HAIR. The silicone cover, which lays on the hair, can hinder the transformation and smoothing of the synthetic hair portion.

*The PLATINUM HAIR LINE care instructions contain detailed care information.*



# ÜBERSICHT HAARFARBEN

## OVERVIEW HAIR COLOURS



Espresso-Mix (2/4)



Dark-Mocca-Mix (4/8)



Mocca-Mix (6/10-6)



Chocolate-Mix (8/10/27/20)  
Chocolate-Mix-Root (8/10/27+Root8)



Medium-Blond-Mix-Root  
(10/12/20+Root10)



Caramel-Root (12/27/22H+Root10)



Vanilla-Light-Root (11/20/23-11+Root11)



Light-Blond-Mix (15/20/23+Root11)  
Light-Blond-Mix-Root (15/20/23+Root10)



Champagne-Root (20R/23+Root10)



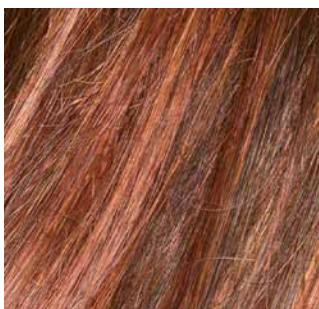
Nordic-Ash-Blond (22/23-16+Root16)



Swedish-Blond-Mix (25R/22H-20+Root16)  
Swedish-Mix (23A/25R/26)



Dark-Cherry (4/133/32B)



Ruby-Mix (33/32B/135/29)



Light-Copper-Mix (30/27)



Dark-Smoke-Grey (39/43+F56)



Salt & Pepper (51/44-44)



Smoke-Grey (43/56-39)



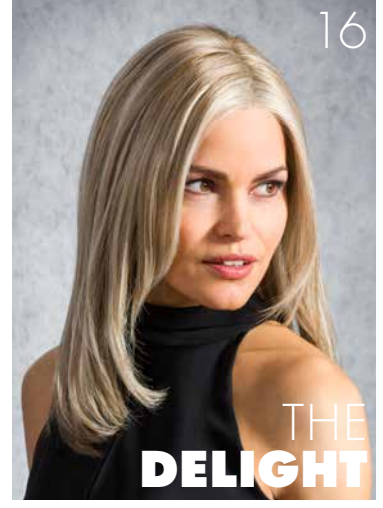
Blond-Grey-Root (17/101+Root18)



Pearl-Blond (101/14-14)  
Pearl-Blond-Root (101/14+Root10)



PERÜCKEN  
WIGS



HAARTEILE  
HAIR PIECES





BelleMadame®

PLATINUM HAIR LINE

by DENING HAIR

© Dening Hair GmbH, Hamburg  
www.dening.de | 04.2024